

The official publication of the Clifton Chamber of Commerce

FREE

Winter Issue 2017

DISCOVER

Clifton

*Norwegian
Country Christmas
Tour 2017*



In this issue:

Fallfest

Clifton's Culinary Scene

Norwegian Country
Christmas Tour

Ribbon Cuttings

New Members & Updates

Calendar of Events

Eat, Shop, and Stay

Clifton Chamber of Commerce Membership Directory, p. 53



Welcome from the Chamber!

The Clifton Chamber of Commerce would like to welcome you to our community.

Brochures and literature for the Clifton area are available, so stop by as soon as you get to town and let us make your visit or move more pleasant by showing you everything Clifton has to offer. The Chamber's Visitors Center is open 5 days a week for your convenience, and is located at 115 North Ave. D, or contact us at 254-675-3720.

Location

Clifton is located in south central Bosque County at the north end of the beautiful Texas hill country. Clifton is 36 miles from Waco, 135 miles from Austin, 90 miles from Dallas/Ft. Worth and 215 miles from Houston.

Culture

Clifton is one of 24 Texas Cultural Art Districts and home to more than 20 nationally and regionally acclaimed artists. The Chamber has numerous paintings from local artists on display in their building. Clifton is also home to the Bosque Arts Center which hosts an Annual Art Classic show and sale that receives more than 750 applicants each year. Historic downtown has several art galleries, a community theater, a community chorale, an artisan group, a dance studio and the CLIFTEX, the oldest continuously operating movie theater in Texas.

Climate

Summers in Clifton are hot, and the winters are usually mild. An average year has 37 days of below freezing temperatures, around 32 inches of rainfall, and 230 days of sunshine. But as everyone who lives in Texas knows, the weather is very unpredictable so come prepared for anything.

Population

The population of Clifton is 3,442 but that is just inside the city limits. Outlying rural areas contribute another 3,864 that are covered by zip code 76634.

We are looking forward to your visit to our wonderful city!

Paige A. Key
Executive Vice President
Clifton Chamber of Commerce

2017 Clifton Chamber of Commerce Board of Directors

- Patricia Coy—*President*
Patricia Coy & Associates, LLC
- Keith Morrison—*Vice President*
BCP Real Estate
- Michael Street—*Past President*
Atmos Energy
- Grant Ferguson—*Treasurer*
Treaty Oak Gallery
- Michele Frank—*Secretary*
Calpine

Directors

- Mike Anderson—*Aars & Nelson Insurance*
- Rich Douglas—*CLIFTEX Theatre*
- Brent Grelle—*Gearench*
- Jackie Murski—*Flint Creek Country Estate*

Executive Vice President
Paige A. Key
paigekey@cliflontexas.org

Office Manager
Angela Smith

Clifton Chamber of Commerce

115 N. Ave. D
Clifton, TX 76634
Phone: (254) 675-3720
1-800-344-3720
Fax: (254) 675-4630



Professional, Friendly, Real Estate Service





Bosque County Properties, LP

(254)675-3818

bosquecountyproperties.com


*Serving Bosque, Hamilton, Coryell, Hill,
and surrounding counties*

TEXAS SAFARI RANCH

Texas Safari Ranch is a world class facility located outside of Clifton, Texas. It is a managed ranch capable of facilitating the recreational needs of hunters, corporations, families, weddings, parties, and family reunions.

Contact us for trophy class exotic hunting, dove hunting, fishing, photo safari trips, luxury home vacation rentals, and assembly and meeting facilities.



192 PR 4293, Clifton, TX 76634 • (214) 384-3000

OCTOBER

- 1 The Show of Shows**
2pm Harmonix and Turning Point Dance Performances at Bosque Arts Center. For information call 254.675.3724 or visit www.BosqueArtsCenter.org
- 3 The Show of Shows**
7-9pm Bosque Chorale Performance at Bosque Arts Center. For information call 254.675.3724 or visit www.BosqueArtsCenter.org
- 4 Clifton Civic Improvement Society Meeting**
2pm at Clifton Civic Center
- 4, 11, 18, 25 Bosque Valley Golf Scramble**
6pm at Bosque Valley Golf Course. For more information and sign up call 254.435.2692.
- 5 The Show of Shows**
7-9pm harpist performance at Bosque Arts Center. For information call 254.675.3724 or visit www.BosqueArtsCenter.org
- 5, 12, 19, 26 Bosque County Rotary Club**
12pm at Clifton Civic Center. Lunch and program. For information 254.386.6244
- 7 3rd Annual Sporting Clays Tournament**
7am. For more information call 254.675.3845 or visit www.BosqueMuseum.org
- 7 Free First Saturday**
10am-5pm at Bosque Museum. For more information call 254.675.3845 or visit www.BosqueMuseum.org
- 7, 14, 21, 28 Clifton Farmer's Market**
9-11am at Clifton Classic Chassis Auto Museum parking lot, 406 W. 5th Street. For information deb@debtolman.com
- 12 Clifton Lions Club**
12pm at Clifton Chamber of Commerce Conference Room. Lunch and program.
- 12 Tablescapes Opening Reception**
Bosque Arts Center. For information call 254.675.3724 or visit www.BosqueArtsCenter.org
- 12-31 Tablescapes Exhibit**
Bosque Arts Center. For information call 254.675.3724 or visit www.BosqueArtsCenter.org
- 13 Clifton HS Homecoming Football**
Kick-off at 7:30pm at Cub Stadium. For information call 254.675.1895.
- 14 Meyer Observatory Open House**
7:30-10:30pm Meyer Observatory. For more information call 254.326.1027, contact starmandan@hotmail.com, or visit www.centexastronomy.org
- 19 Bingo**
7pm at Bosque Arts Center. For information call 254.675.3724 or visit www.BosqueArtsCenter.org
- 20 Ladies Luncheon w/Rose-Mary Rumbley**
Bosque Arts Center. For information call 254.675.3724 or visit www.BosqueArtsCenter.org
- 21 FallFest**
10am-6pm – Historic Downtown Clifton. For more information 254.675.8337.
- 21 Art at the Mill**
10am-6pm at Market at the Mill. For more information, call 254.744.4517 or visit www.marketatthemillclifton.com
- 21 Art Club Art Show & Artisan Sale**
Bosque Arts Center. For information call 254.675.3724 or visit www.BosqueArtsCenter.org
- 21 4th Annual Clifton Diner en Blanc**
The white dinner fundraiser for The Silo Project will have a romantic setting for the dining experience this year – under oak trees near a pond. As usual it's a mystery location until the event, great music, fine dining, & sparklers after dinner. More details to follow.
- 28 Texas Troubadour with Eddy Raven**
5-9pm at Bosque Arts Center. For information call 254.675.3724 or visit www.BosqueArtsCenter.org
- 31 Trick or Treat on Main Street**
6-8pm in Downtown Clifton, Avenue D.

NOVEMBER

- 1 Clifton Civic Improvement Society Meeting**
2pm at Clifton Civic Center
- 1-4 Tablescapes Exhibit**
Bosque Arts Center. For information call 254.675.3724 or visit www.BosqueArtsCenter.org
- 2, 9, 16, 23, 30 Bosque County Rotary Club**
12pm at Clifton Civic Center. Lunch and program. For information 254.386.6244

Clifton Community Calendar—Winter 2017

NOVEMBER, cont.

- 4 Free First Saturday**
10am-5pm at Bosque Museum. For more information call 254.675.3845 or visit www.BosqueMuseum.org
- 4 Holiday Craft Cocktails**
Time TBA. Chef Oz demonstrates at Bosque Arts Center. For information call 254.675.3724 or visit www.BosqueArtsCenter.org
- 4-5 Greene/Grelle Workshop**
Bosque Arts Center. For information call 254.675.3724 or visit www.BosqueArtsCenter.org
- 4, 11, 18, 25 Clifton Farmer's Market**
9-11am at Clifton Classic Chassis Auto Museum parking lot, 406 W. 5th Street. For information deb@debtolman.com
- 9 Clifton Lions Club**
12pm at Clifton Chamber of Commerce Conference Room. Lunch and program.
- 11 Smorgasbord**
4:30 and 6:00 pm servings. For ticket information visit oursaviorsnorse.org/smor-gasbord.html
- 11 Go Texan Extravaganza**
5:30pm at Clifton Armory. For tickets and information call Michele at 254.855.9253 or Keith at 254.396.1136.
- 11 Meyer Observatory Open House**
6-9pm Meyer Observatory. For more information call 254.326.1027, contact starmandan@hotmail.com, or visit www.centexastronomy.org
- 16 Bosque Civic Music Assoc. Meeting & Music**
7pm at Bosque Arts Center. For information call 254.675.3724 or visit www.BosqueArtsCenter.org
- 18 Showdown on the Bosque**
8 am. Central Texas Youth Fair Association. 108 E. 7th Street. For information call Bryan Prescher at 214.585.1813.
- 20-24 Clifton ISD School Holiday**

- 24-25 Variety Show**
Bosque Arts Center. For information call 254.675.3724 or visit www.BosqueArtsCenter.org
- 25 55th Annual German Heritage Sausage Supper**
Zion United Church of Womack. For more information 254.675.3599 or visit www.zionunitedchurchwomack.com
- 27-30 Randy Meador One Man Show**
Bosque Arts Center. For information call 254.675.3724 or visit www.BosqueArtsCenter.org
- 30 Christmas Art Show Opens**
10am-5pm. Western Artist Roundup art show at Market at the Mill. For more information, call 254.744.4517 or visit www.marketatthemillclifton.com

DECEMBER

- 1 Lighted Christmas Parade**
6:30pm Downtown Clifton
- 1-2 Christmas Art Show**
10am-5pm. Western Artist Roundup art show at Market at the Mill. For more information, call 254.744.4517 or visit www.marketatthemillclifton.com
- 1-2 Arts of Christmas Expo**
Bosque Arts Center. For information call 254.675.3724 or visit www.BosqueArtsCenter.org
- 1-2 Victorian Christmas Open House**
Bosque Museum. For more information call 254.675.3845 or visit www.BosqueMuseum.org
- 1-9 Randy Meador One Man Show**
Bosque Arts Center. For information call 254.675.3724 or visit www.BosqueArtsCenter.org
- 2 Norwegian Country Christmas Tour**
9am-5pm. For information and tickets call 254.675.3720 or visit www.cliftontexas.org
- 2 53rd Annual Lutefisk Dinner**
Cranfills Gap School. For more information visit Facebook: "Cranfills Gap Lutefisk Dinner"

DECEMBER, cont.

- 2 6th Annual Cookie Stroll**
8am-3pm at First United Methodist Church. For information call 254.675.3984 or visit fumclifton.com
- 2, 9, 16, 23, 30 Clifton Farmer's Market**
9-11am at Clifton Classic Chassis Auto Museum parking lot, 406 W. 5th Street. For information deb@debtolman.com
- 4 Bingo!**
7pm at Bosque Arts Center. For information call 254.675.3724 or visit www.BosqueArtsCenter.org
- 6 Clifton Civic Improvement Society Meeting**
2pm at Clifton Civic Center
- 7 "One Cool Yule" Christmas Pops Concert**
Bosque Chorale. 7:30pm at Bosque Arts Center. For information call 254.675.3724 or visit www.BosqueArtsCenter.org
- 7, 14, 21, 28 Bosque County Rotary Club**
12pm at Clifton Civic Center. Lunch and program. For information 254-386-6244
- 9 Meyer Observatory Open House**
6-9pm Meyer Observatory. For more information call 254.326.1027, contact starmandan@hotmail.co, or visit www.centexastronomy.org
- 11 Clifton High School Band Christmas Concert**
Time TBA at Clifton High School Cafetorium. For information call 254.675.2827.
- 12 Clifton Middle School Band Christmas Concert**
Time TBA at Clifton High School Cafetorium. For information call 254.675.2827.
- 14 Clifton Lions Club**
12pm at Clifton Chamber of Commerce Conference Room. Lunch and program.
- 17 Gingerbread House Workshop**
2-4pm at Bosque Arts Center with Kit Myer. For information call 254.675.3724 or visit www.BosqueArtsCenter.org
- 20- Jan 2 Clifton ISD School Holiday**

JANUARY 2018

- 3 Clifton Civic Improvement Society Meeting**
2pm at Clifton Civic Center
- 3 Clifton ISD Return to Classes**
- 4, 11, 18, 25 Bosque County Rotary Club**
12pm at Clifton Civic Center. Lunch and program. For information 254-386-6244
- 6 Free First Saturday**
10am-5pm at Bosque Museum. For more information call 254.675.3845 or visit www.BosqueMuseum.org
- 6, 13, 20, 27 Clifton Farmer's Market**
8-10am at Clifton Classic Chassis Auto Museum parking lot, 406 W. 5th Street. For information deb@debtolman.com
- 11 Clifton Lions Club**
12pm at Clifton Chamber of Commerce Conference Room. Lunch and program.
- TBA Meyer Observatory Open House**
6-9pm Meyer Observatory. For more information call 254.326.1027, contact starmandan@hotmail.com, or visit www.centexastronomy.org
- TBA Lonesome Dove Exhibit**
Bosque Museum. For more information call 254.675.3845 or visit www.BosqueMuseum.org

there's an app
for that ...

promoting
Clifton, Texas
to tourists



15th Annual **FALLfest** bigger n better than ever!
PRESENTED BY CLIFTON MAIN STREET

BIERGARTEN & LIVE MUSIC | a fun event for the entire family | something for everyone

**SATURDAY
OCT. 21ST**

STATEWIDE VENDORS
 CLASSIC CAR SHOW
 1 MILE 5K FUN RUN
 BOSQUE ARTS CENTER ART SHOW
 NATIONALLY RECOGNIZED QUILT AUCTION
 CHILDREN'S AREA
 ARTISAN DEMONSTRATIONS
 FOOD & FUN
 KID FISH CATCH & RELEASE TANK
 LIVE ENTERTAINMENT

QUILT AUCTION
 CAR SHOW
 MARKET ON MAIN ST.
 CHILDREN'S AREA
 & MUCH MORE

MUSIC
 FOOD
 FAMILY
 FUN

fallfest 2017
DOWNTOWN CLIFTON, TX

BACK BY POPULAR DEMAND!
kid Fish
 CATCH & RELEASE TANK
PRESENTED BY THE FORESHOARD CLUB OF FORTH WORTH

CLIFTON TEXAS

VISIT US ONLINE AT
 WWW.VISITCLIFTON.ORG
 FIND US ON FACEBOOK - THECLIFTONCLIFTON

FOR MORE INFORMATION CALL 254.675.8537

FALLfest 2017

PRESENTED BY CLIFTON MAIN STREET

As cooler weather sets in, friends and families delight in the return of Clifton's ever-popular FallFest on October 21, 2017. In its 16th year, the festival is bringing back favorite attractions and ushering in new treats. The autumn breezes will be filled with the tunes of live entertainment, the tempting aromas of delectable foods, and the laughter of festival goers.

Strolling along Downtown Clifton's historic avenues, visitors will find artisans and crafters from around the state in the Market on Main Street. Unique shops, galleries, boutiques, and eateries will welcome guests in addition to the festival vendors gathered with their distinctive wares and delicious foods. Nellie Pederson Civic Library will also be on site hosting its annual Book Sale as part of the festivities.

FallFest includes fun for the entire family. A large play space is reserved for The Children's Area, featuring new interactive exhibits and games along with the extremely popular KidFish Catch & Release Tank! With two entertainment stages this year, festival goers will be able to enjoy music and dance performances of local talents throughout the day.

Cruisin' Main Street Car Show returns for its 13th year with the Show of Wheels. In addition to fabulous cars, the show is adding motorcycles to the 2017 event. Market at the Mill will be the site for Show of Wheels, one of FallFest's favorite attractions and the meeting place for car and bike enthusiasts from around the region.



Market at the Mill is also hosting local artists and artisans in a show and sale of original works in The Produce House. Additionally, Market at the Mill will celebrate the day with music, shopping, and food & drinks at their FallFest premiere.

Nearby, Lutheran Sunset Ministries' nationally-recognized Quilt Auction will take place in the newly renovated Clifton Civic Center in historic downtown. Lutheran Sunset Ministries has hosted the Quilt Auction annually since 1991. Church congregations and individuals across Texas donate approximately 100 quilts to the auction each year. These beautiful blankets are auctioned to raise funds for equipment and furnishings for the ministry's residents.

In conjunction with FallFest, The Bosque County Art Club Art Show & Sale will be presented at the Bosque Arts Center. The judged exhibition will be on view, and artisans will be demonstrating their methods and selling their wares in Clifton's exquisite fine arts facility.

For those wishing to start the day with fresh air and exercise, the 27project is hosting the 5K/10K Fun Run and Walk in Clifton City Park at 8am. All ages and levels of fitness are invited to participate, and proceeds benefit the local food bank, The Cove – Waco, Young Lives, Unbound, and additional anti-trafficking efforts. Packet pick-up and Day of Registration begin at the Gazebo at 7am.

Art, autos, quilts, culinary delights, music, motorcycles, fitness, and fun! FallFest offer something for everyone!

Contact information for participants, vendors, exhibitors:

Ashley Abel, City of Clifton

aabel@clifontexas.org

254.675.8337

The Perfect Venue for Your Special Event

DANSGY FEED MILLS

EXCLUSIVE SHOPPING FOR UNIQUE HOME DECOR, JEWELRY, APPAREL & GIFTS

324 W. 3RD STREET • DOWNTOWN CLIFTON • 254.744.4517

Market AT THE Mill



At Capital Farm Credit,
your goals are our goals.
We take pride in helping
Texans grow and thrive.

**Together
we're better.**

CLIFTON 254.675.8698
WACO 254.776.7506

capitalfarmcredit.com
NMLS493828

HIGHLANDER SPIRITS

Specializing in Texas Liquors,
Wines, and Beer

**10 am–9 pm
Monday–Saturday**

254-435-9177

**9376 Hwy 6
Meridian, TX 76665**

American/Locally Owned & Operated

- Bonded & insured
- Family-owned, based in Clifton
- Schedules to fit your needs
- Affordable
- No job too big or too small
- 20 years of experience

Call for a FREE estimate
254.366.5886
or e-mail at
L2Solutions.TX@gmail.com

**COBB
PROPERTIES**

SELLING FINE TEXAS RANCHES

Stefanie Cobb, RANCH BROKER	(972) 989-5220
Tai C. Klam, RANCH BROKER	(254) 253-0157

COBBRANCHPROPERTIES.COM

SERVING BOSQUE, HAMILTON, AND SURROUNDING COUNTIES

**"The Dahl House"
Guest Residence**

410 N. Ave. M • Clifton, Texas 76634

- Remodeled with period furnishings
- Accommodates 4 to 6 guests
- Available for a day or a week

For reservations and pricing, contact:
Dr. Terry Watson
214.906.0245
(calls returned evenings)

www.dahlhouserresidence.com

406 W. 5th
Clifton, Texas 76634

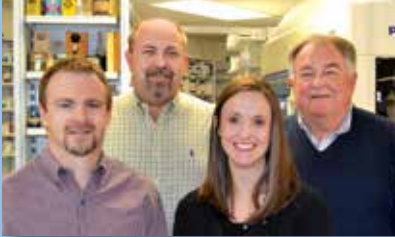
To schedule a viewing,
please contact Royce Graham:
254.253.0262

www.CliftonClassicChassis.org

Terry Watson • 214.906.0245

"Your Hometown Pharmacy"

Albrecht's Pharmacy, Inc. & Hallmark Gift Shop



Sean Albrecht • Clinton Albrecht • Sheridan Sibley • Gene Albrecht

HOURS:
Mon.-Fri. 8 am-6 pm
Sat. 8 am-2 pm

Free In Town Delivery!



254-675-8398

www.albrechtspharmacy.com 506 W. 5th • Clifton, TX



WELCOME

New Chamber Members!

A6 Gas & Market – Ray Bhai brings convenience store services back to the western edge of Clifton with the opening of A6, where customers will find name-brand foods, beverages, and gas.

Bedrock Concrete & Construction – Owner Steve Lightford has been a concrete contractor in Central Texas since 1989; his team has years of experience in both commercial concrete projects such as building foundations, parking lots and driveways, sidewalks and patios.

Bosque County Storage – serves the communities of Bosque County Texas with conveniently located self-storage facilities in the towns of Clifton and Valley Mills.

Bosque Timber Stone & Steel – John Fowlkes' team specializes in custom fabrication of wood, steel, and granite, from the ordinary to well outside of the box, from rustic ranch to modern timber frame.

Breaking Bread Bakery & Deli – Paul and Charisse Morales offer a tempting variety of sweets and pastries, deli sandwiches made on their fresh baked breads, and hot French press coffee; in addition, they offer specialty services for wedding and custom cakes, dessert tables, and a full-service deli for home or party meats and cheeses.

Clifton Fix & Rent – The Fouts Family recently opened for business on Highway 6, serving the Clifton area with trailer repair and equipment rental and repair.

Corner Drug Café – Nena Rieser brings her culinary skills back to her roots with the opening of her American café, featuring breakfast and lunch specials and soda fountain delights from the historic, restored Corner Drug fountain.

Antiques • Collectibles • Art & Sculpture • Furniture • Accessories



**BOSQUE
COUNTY
EMPORIUM**
ANTIQUES & COLLECTIBLES

121 N Avenue D • Clifton, Texas 76634 • 254.675.8133

David Marlin Jewelers – Owner David Laramore presents a varied selection of lovely, unique jewelry and offers jewelry, watch, and clock repair services at his conveniently located shop on Highway 6.

J&H Insurance Services, Inc. – With a carefully chosen staff of knowledgeable, client-focused individuals, the J&H staff rises to the challenge to bring the most value to your insurance dollar as possible.

Just Loveleigh – Owners Sharon & Drew Leigh are authorized dealers of Jon Hart Design, offering Texas-made personalized luggage, bags, specialty gifts, and more available in Blossom Shoppe, Etc....

Kindred Hospice of Waco – is helping people receive high-quality, compassionate end-of-life care while surrounded by friends and family.

Mike Schmidt Motors – Mike Schmidt has been working full-time in the car business in Clifton for 38 years; and since 1985 Mike has been engaged in Used Vehicle Sales at his current location on Highway 6 in Clifton, offering a wide range of vehicles for sale at good prices.

Sinclair – Owners Kaye Robinson Callaway, Curtis Callaway, and Sonya Cote created this farm-to-table restaurant with a truly seasonal menu and distinctive ambience inspired by local history, a passion for food, friendship, and giving back to the community.

Toby's Handyman & Construction Service – Toby Sowers provides a full handyman and construction service, combining quality work and affordable prices for the Clifton area.

Wallace Sight & Sound Productions, Inc. provides Bosque County with a wide-range of media and technical-related facilities, equipment and consulting services including live music, sound reinforcement/PA systems, television/video production, multi-track audio recording, and other media development, including internet-based solutions.

For more information on our new and established Clifton Chamber of Commerce members, visit the Membership Directory in the back of this issue of "Discover Clifton!"



From Our Hearts to Your Home

Breaking Bread Bakery and Deli LLC


*Custom Cakes • Cupcakes
Pastries • Fresh Bread
Deli Sandwiches and more!*

*Featuring Boar's Head Brand meats and cheeses

Come on in so we can break bread together!

254-675-1213

www.breakingbread120.com
breakingbread120@gmail.com
120A North Avenue D, Clifton, Texas 76634




**MIKE SCHMIDT
MOTORS**

254-386-7721

410 N. Avenue G (Hwy 6)
Clifton, Texas

mikeschmidtmotors.com

**Bosque County
Storage**



- 24/7 security
- Conveniently located on Hwy 219
- Close to Goodall Witcher Hospital and Clifton Lutheran Sunset Home

254-386-7721

bosquecountystorage.com



BROOKS

WEALTH ADVISORS

STACY BROOKS

254-675-8000
100 N Ave. G
Clifton, TX 76634

Stacy.Brooks@RaymondJames.com

**“YOUR FINANCIAL ADVISORS
FOR LIFE”**



Harris House

GUEST HOUSE

Spend some peaceful time with all the comforts and conveniences of home—located 3 miles east of Clifton on a hill overlooking the valley.



The Harris House is a newly restored 1918 farmhouse featuring:

- accommodations for 10
- 2 bedrooms
- 2 full baths
- enclosed sleeping porch
- fully-equipped kitchen
- washer/dryer (for those light packers)
- smart TV
- wireless network



Complimentary bread and Bosque County honey await you for breakfast.

Reserving Harris House ensures exclusivity to only you and your guests.

harrishouseclifton.com

Call or email for rates:

Damaris Neelley (254)749-6292
damaris.neelley@gmail.com



The Clifton Chamber of Commerce would like to congratulate David Marlin Jewelers!

On Tuesday, July 18th a group of friends, family and customers joined owner David Laramore of David Marlin Jewelers, to celebrate a ribbon cutting and open house. This new jewelry shop offers a wide selection of unique and charming jewelry, jewelry repair and clock repair. Visit them at 117 North Ave. G, they are open Tuesday through Saturday 10am to 5pm.

David Marlin Jewelers
117 N. Ave G
Clifton, TX 76634
254-675-4653



DEE ANNA WALKER, DDS

DYNAMIC FAMILY DENTISTRY

Providing general dentistry including emergency care, cosmetic, implants, dentures and 6 month smiles adult orthodontics. New patients accepted.

302 S. Ave. Q • Clifton, Texas 76634

254.675.3518

BosqueCountyDentist.com

LLV Studio

Lloyd Voges WAA, WAR
Oil Paintings

"Weathering The Storm"
18 x 24 oil on canvas

WESTERN ARTIST ROUNDUP

P.O. Box 98
Clifton, Texas 76634
254.723.3158

www.llvstudioilloydvoges.com



FEATURES:

- Complimentary Buffet
- Outdoor Pool
- Exercise Facilities
- Laundromat
- Cable Satellite TV with Premium Channels
- Coffeemaker in each room
- Microwave/Refrigerator in each room
- Hair Dryer/Iron/Ironing Board in each room
- Business Center
- Free Hi-Speed Internet
- Free Parking

VELKOMMEN INN

1215 N. AVE. G • CLIFTON, TX 76634



For reservations, call (254) 675-8999

Rountree Appliance & Electronics



Now Ordering
Ashley
Furniture

Serta
MATTRESSES

254-675-3515



Smartphone & Tablet Repair
also Unlocking Service

RountreeAppliance.net

815 N Ave. G • Clifton, TX 76634

HD Camera Systems

Professional Installation
View from PC/Smartphone/Tablet
1 Year Warranty on Product & Installation
RESIDENTIAL & COMMERCIAL

Get Your **FREE** Quote Today!

Rountree Appliance & Electronics

254-386-0014 Call Lynn Hamilton
254-675-3515 Call Virginia Clifton

The Bosque Arts Center

Tablescapes

Opening Reception
Thursday
October 12
6-9 p.m.
\$25

*Creative decorating ideas
for all reasons, seasons,
and occasions*

On display Oct. 13 - Nov. 4

Event Tickets Online at BosqueArtsCenter.org

Eddy Raven

*in Concert
at the*

**Bosque Arts Center
Texas Troubadour
Songwriter Classic**

Saturday
October 28, 2017
5 pm

*Top 10 Troubadour Contestants followed
by Eddy Raven & Frank Myers*

Tickets \$25 - \$50 - \$75 - \$200

254.675.3724 | BosqueArtsCenter.org | Tickets & Information

ARTS OF CHRISTMAS EXPO

December 1-2, 2017

Holiday music, treats, & gift ideas

*Featuring artist Randy Meador's
One-Man Show*



*New Day,
New Mount*

215 S. College Hill Drive | Clifton, Texas

The official publication of the Clifton Chamber of Commerce

www.cliflontexas.org



Kenneth W. Mills Financial Advisor
254-675-3023 • Bus
254-715-0056 • Cell
888-498-6516 • Fax
kenneth.mills@edwardjones.com

Margaret Garcia Branch Office Administrator
254-675-3023
margaret.garcia@edwardjones.com

715 South Ave G • Clifton, TX 76634
www.edwardjones.com

Edward Jones
MAKING SENSE OF INVESTING



ON TARGET!
GENERAL GUNSMITHING

- Graduate—Colorado School of Trades 14-month Resident Program, Degree in Gunsmithing
- Certificates—Arma Lite AR-15/16, Mossberg Shotguns, Sig Sauer Pistols
- Memberships—American Gunsmithing Association, Life Member NRA
- Federal Firearms License—Can receive firearms and perform transfers.
- Will focus on the needs of handicapped, elderly, and wounded warriors.
- Provide personalized service by appointment.

(254) 775-4710 • Morgan, Texas

"A well-maintained firearm performs better, lasts longer, and stays ON TARGET!"

BOSQUE

REAL ESTATE, INCORPORATED

Local Leaders in Real Estate!

www.bosquerealestate.com



Two Offices to Serve You Better

Clifton—Hwy 6 & FM 219
(254) 675-8092

Whitney—100 E. Jefferson
(254) 694-5374

THE River's Bend
Doggie Drop Inn

254.675.4936

- Safe & Secluded
- Air-conditioned
- 4' x 13' Kennels
- Large Outdoor Exercise Area
- One-to-one Care
- Lots of hugs & kisses
- Reinforced Training

DOGGIEDROPINN2@GMAIL.COM

WWW.DOGGIEDROPINN.COM

HELEN M. HUBLER



Complete yardcare services.

- Mowing. Irrigation. Landscaping. Outdoor lighting.
- Grounds management. Fertilization services.
- Tree trimming and removal.



The Quality You Want, The Service You Deserve

675-3934

smcdaniel@mcdanielyardscaper.com
www.mcdanielyardscaper.com

Fully insured for your protection. ♦ LI 17374





Each guestroom offers:

- private bath
- television (DirecTV) & alarm clock
- coffee maker
- windows with natural light
- thermostat

Historical charm with all the comforts of home

Breakfast is now being served in the Corner Drug Cafe, site of the old Corner Pharmacy.

Screen Door Inn

www.ScreenDoorInn.com (online reservations accepted)

110 N. Ave D • Clifton, Texas



(254) 675-STAY

CORNER DRUG CAFE

Serving Breakfast & Lunch

Open Wednesday – Sunday

102 N. Ave D • Clifton, Texas

DIVINE

Living Assistance

No contract or deposit required.
Bonded – Insured

Some of our services:

- Meal Prep
- Hygiene Assistance
- Light Housekeeping
- Medical Reminders
- Errands/Shopping
- Short Term or Live-in
- Transferring
- In-home or Facility
- Personal Care
- Free in-home Consultation
- Companionship

254-694-8614

SERVING THE INSURANCE NEEDS OF
CENTRAL TEXAS SINCE 1929



AARS & NELSON INSURANCE AGENCY

- HOME
- AUTO
- BUSINESS
- BONDS
- LIFE & HEALTH

MIKE ANDERSON

P.O. Box 545 • CLIFTON, TX 76634
254/675-8601 • FAX 254/675-2483

MIKE@AARSANDNELSONINSURANCE.COM

WESTERN WEAR

SERVING BOSQUE COUNTY SINCE 1981



**MONDAY – SATURDAY
9AM – 5:30PM**

410 W 5TH ST
CLIFTON, TEXAS
254.675.8113

EMAIL: JULIEC210@CENTURYLINK.NET



**Delivering Your Electricity
Safely, Reliably**



Texas-New Mexico Power is an electricity transmission and distribution service provider, providing electricity to about 254,000 accounts throughout Texas. We have about 350 employees in more than 20 communities throughout Texas.

Offering complete funeral prearrangements



CLIFTON Funeral Home

303 S. Avenue F — Clifton, Texas 76634—(254) 675-8611
www.cliftonfh.com • email info@cliftonfh.com

Where Customer Service is ALWAYS our #1 Priority!



CLIFTON FEED & SERVICE



Family Owned & Operated Since 1968

- **Corinthian Bell Chimes**
- **Exclusive Dog Food**
- **Sullivan Show Supplies**
- **Deer Feeders, Batteries, & Timers**
- **Trojan Golf Cart Batteries**
- **Protein & Mineral Blocks**
- **Deer Blocks & Attractants**



www.CliftonFeed.com
cliftonfeed@gmail.com



We Deliver—Bags OR Bulk!

**Monday-Friday 8-5pm
Saturday 8-3pm**

203 East 5th Street, Hwy 219 East
Clifton, Texas 76634
254-675-3416

Betty Graham

WATERCOLOR ARTIST

CALL
254-386-7755

to visit
downtown studio



"Bluebonnet Laundry" 10" x 14"

NOTE CARDS & PRINTS AVAILABLE AT: *Bosque County Emporium* • 121 N. Ave D • Clifton, TX



Furniture, Home Decor, Gifts, and MORE!

Lady Bugs

Cathie Lowry
(254) 675-3093

142 N. Avenue D
Clifton, Texas



TREATY OAK
GALLERY

254.675.6126

Art, Prints, and
Handcrafted Items by
Local Artists and Artisans

www.treatyoakart.com

126 N. Ave D



*Texas Size
Service*

604 N Ave G
Clifton TX 76634
254.675.6513
www.Keithhardware.com

Join us at the Bosque Museum

WWI IN BOSQUE COUNTY
ON EXHIBIT THRU FALL

VICTORIAN CHRISTMAS
OPENS DECEMBER 1-2

FREE ADMISSION
EVERY FIRST SATURDAY OF THE MONTH

LONESOME DOVE EXHIBIT
COMING: JANUARY 2018

Follow Us
Facebook | Twitter
[@bosquemuseum](https://www.facebook.com/bosquemuseum)
bosquemuseum.org
TUES - SAT: 10A-5P
(254) 675-3845

STEVEN L. REGAN, DDS, PLLC

Comprehensive & Affordable Dental Care for the Whole Family

Serving Bosque County
& the surrounding area
for more than 15 years



3D Conebeam CT scanning • Digital x-rays • 3D optical CAD scanner
Dental Implants: "Teeth in a Day"

102 Posey Avenue • Clifton, TX 76634 • Phone 254-675-8301 • stevenregandds.com

MEREDITH KATE Fashion & Furnishings



Women's Clothing & Accessories, Gift Items,
Antiques & Collectibles

134 N. Avenue D Clifton, TX 76634
Tues-Sat 10:30am-5:30pm
254.744.8133
meredithkatefashions@gmail.com



Experience movie magic at The Cliftex
Since 1916, The Cliftex has been
showcasing the best from Hollywood.

For weekly show times, advertising,
and rental opportunities, visit
www.thecliftex.com

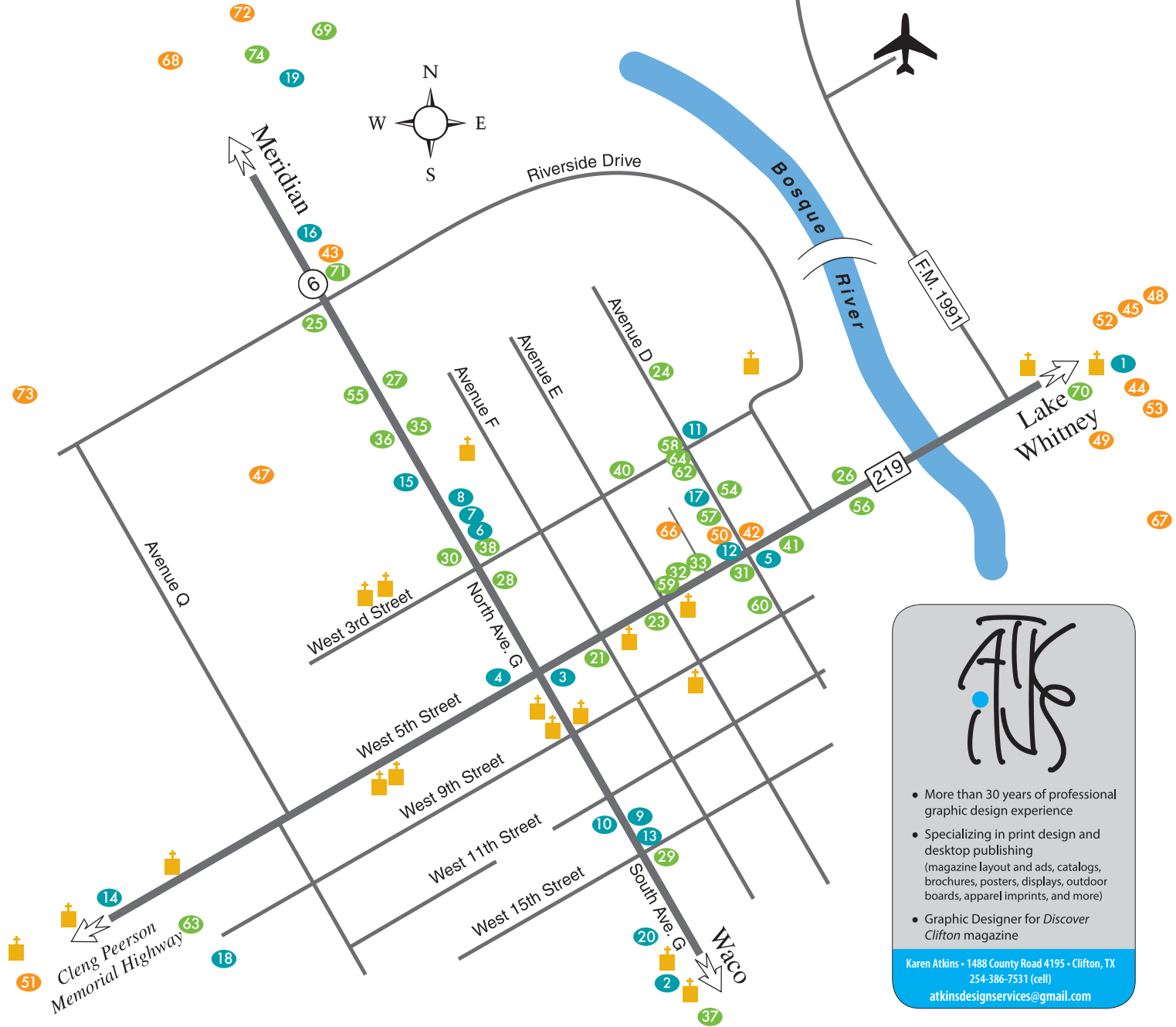
- | | | |
|---|-------------------------------|--------------|
| 1 Bosque Resort Restaurant & Bar* | 341 St. Hwy. 22 ~ Laguna Park | 254-622-2034 |
| 2 Bunkhouse BBQ* | 1003 S. Avenue G ~ Clifton | 254-675-8409 |
| 3 Burger King | 102 S. Avenue G ~ Clifton | 254-675-6111 |
| 4 Chicken Express* | 621 W. 5th St. ~ Clifton | 254-675-1718 |
| 5 China Wok* | 210 W. 5th St. ~ Clifton | 254-675-8800 |
| 6 Dairy Queen * | 311 N. Avenue G ~ Clifton | 254-675-3003 |
| 7 El Charro | 611 N. Avenue G ~ Clifton | 254-675-4001 |
| 8 Chep's Pizza & Burgers | 615 N. Avenue G ~ Clifton | 254-675-4000 |
| 9 Johnny's Place | 502 S. Avenue G ~ Clifton | 254-675-2001 |
| 10 Los Verdes | 403 S. Avenue G ~ Clifton | 254-675-2373 |
| 11 Sinclair* | 215 W. 3rd St. ~ Clifton | 254-675-8888 |
| 12 Corner Drug Cafe* | 102 N. Avenue D ~ Clifton | 254-265-7737 |
| 13 Royal Pizza | 602 S. Avenue G ~ Clifton | 254-675-4500 |
| 14 A6 Gas & Market* | 2003 W. 5th St. ~ Clifton | 254-675-1788 |
| 15 Sonic Drive-In | 806 N. Avenue G ~ Clifton | 254-675-8336 |
| 16 Subway | 1225 N. Avenue G ~ Clifton | 254-675-3358 |
| 17 Breaking Bread Bakery & Deli* | 120A N. Avenue D ~ Clifton | 254-675-1213 |
| 18 Windmill Cafe* | 1604 W. 9th St. ~ Clifton | 254-675-2263 |
| 19 Zur Autobahn, German Restaurant | 10668 Hwy 22 ~ Meridian | 254-597-0232 |
| 20 Red Caboose Winery* | 903 S. Avenue G ~ Clifton | 254-675-0099 |
| 21 Albrecht's Pharmacy* | 506 W. 5th St. ~ Clifton | 254-675-8398 |
| 22 B. J. Western Wear* | 410 W. 5th St. ~ Clifton | 254-675-8113 |
| 23 Blossom Shoppe, Etc.* | 215 N. Avenue D ~ Clifton | 254-675-3444 |
| 25 Brookshires Food & Pharmacy* | 900 FM 3220 ~ Clifton | 254-675-3111 |
| 26 Clifton Feed & Svc. Center Inc.* | 203 E. 5th St. ~ Clifton | 254-675-3416 |
| 27 Shopko* | 927 N. Avenue G ~ Clifton | 254-675-2404 |
| 28 David Marlin Jewelers* | 117 N. Avenue G ~ Clifton | 254-675-4653 |
| 29 David's Supermarket* | 614 S. Avenue G ~ Clifton | 254-675-6345 |
| 30 Keith's Ace Hardware* | 604 N. Avenue G ~ Clifton | 254-675-6613 |
| 31 Leon's Floor Covering* | 302 W. 5th St. ~ Clifton | 254-675-8686 |
| 32 Mac's TV Sales & Service | 321 W. 5th St. ~ Clifton | 254-675-3600 |
| 33 Sweet Hazel* | 313 W. 5th St. ~ Clifton | 254-675-0077 |
| 35 Rountree Appliance & Electronics* | 815 N. Avenue G ~ Clifton | 254-675-3517 |
| 36 Little Allison's Treasures | 910 N. Avenue G ~ Clifton | 254-716-4262 |
| 37 Texas Collection - George Boutwell* | 3083 Hwy. 6 ~ Clifton | 254-675-6676 |
| 38 Tremillo's Computer & Appliance | 215 N. Avenue G ~ Clifton | 254-386-6244 |
| 40 Market at the Mill* | 317 W. 3rd St. ~ Clifton | 254-715-8160 |
| 41 Clifton Antique Mall* | 206 W. 5th St. ~ Clifton | 254-675-2300 |
| 54 Bosque County Emporium* | 121 N. Avenue D ~ Clifton | 254-675-8133 |
| 55 Dollar General | 926 N. Avenue G ~ Clifton | 254-675-6526 |
| 56 Farmer's Market | 406 W. 5th St. ~ Clifton | |
| 57 LA Thompson Gallery of Fine Art | 114 N. Avenue D ~ Clifton | 254-675-2787 |
| 58 Lady Bugs* | 142 N. Avenue D ~ Clifton | 254-675-3093 |
| 59 The Unique Collection | 329 W. 5th St. ~ Clifton | 254-675-4331 |
| 60 The Sale Barn | 203 S. Avenue D ~ Clifton | 512-578-8651 |
| 62 Treaty Oak Gallery* | 126 N. Avenue D ~ Clifton | 254-675-6126 |
| 63 BAC Gift Shop* | 215 College Hill ~ Clifton | 254-675-3724 |
| 64 Meredith Kate Fashion & Furnishings* | 134 N. Avenue D ~ Clifton | 254-744-8133 |
| 69 Highlander Spirits* | 9376 Hwy 6 ~ Meridian | 254-435-9177 |
| 70 Jim's Package Store * | 2577 FM 219 ~ Clifton | 254-675-6308 |
| 71 Tractor Supply Company | 1207 N. Avenue G ~ Clifton | 254-675-2626 |
| 74 Meridian Home Furnishings* | 103 S. Main ~ Meridian | |
| 42 BCP Loft* | 215 W. 5th St. ~ Clifton | 254-675-2091 |
| 43 Velkommen Inn*# | 1215 N. Avenue G ~ Clifton | 254-675-8999 |
| 44 Bosque Resort Motel*# | 351 St. Hwy. 22 ~ Laguna Park | 254-622-3531 |
| 45 Cliffview Resort | 180 CR 1802 ~ Clifton | 254-622-8897 |
| 47 "The Dahl House" Guest Cottage* | 410 N. Avenue M ~ Clifton | 214-906-0245 |
| 48 Lakeshore Lodge | 283 CR 1526 ~ Morgan | 254-622-3096 |
| 49 Riverplace Cottage | 136 FM 2114 ~ Clifton | 254-622-8364 |
| 50 Screen Door Inn*# | 110 N. Avenue D ~ Clifton | 254-675-7829 |
| 51 Three Mountain Retreat* | 1638 FM 182 ~ Clifton | 254-675-3188 |
| 52 Uncle Gus' Lodge & Marina | 112 CR 1710 ~ Clifton | 254-622-2276 |
| 53 Lakehaven Vacation Rental | 321 CR 1630 ~ Clifton | 254-622-3449 |
| 66 Cell Block* | 120 Art Avenue ~ Clifton | 254-227-5656 |
| 67 Harris House Guest House* | 2856 CR 3310 ~ Clifton | 254-749-6292 |
| 68 American Inn & RV Park* | 9307 Hwy 6 ~ Meridian | 254-435-2851 |
| 72 Flint Creek Country Estate* | 849 CR 2365 ~ Meridian | 214-277-4038 |
| 73 Texas Safari Ranch* | 192 PR 4293 ~ Clifton | 214-384-3000 |

* 2017 Chamber Member # Handicap Accessible Lodging

Shop Clifton!

Why shop local? Studies have shown that when you buy from an independent, locally owned business, rather than nationally owned businesses, significantly more of your money is used to make purchases from other local businesses, service providers and farms. This continues to strengthen the economic base of the community.

Keeping our community unique, where we shop, where we eat and have fun, all of it makes our community home. Our one-of-a-kind businesses are a part of the character of Clifton. Our tourism business also benefits. When people go on vacation they generally seek out destinations that offer them the sense of being someplace, not just anyplace. We are investing in Clifton. Local businesses are usually owned by people who live in the area, and are less likely to leave and take more time to invest in the community's future. So when it comes right down to it we should think local first—buy local when you can—*Shop Clifton.*



- More than 30 years of professional graphic design experience
- Specializing in print design and desktop publishing (magazine layout and ads, catalogs, brochures, posters, displays, outdoor boards, apparel imprints, and more)
- Graphic Designer for *Discover Clifton* magazine

Karen Atkins • 1488 County Road 4195 • Clifton, TX
254-386-7531 (cell)
atkinsdesignservices@gmail.com

Perhaps it is the twinkle in the lights, the tantalizing aromas from the kitchen, the strains of carols in the air that awaken the spirit of Christmas Past, drawing our traditions and heritage to the foreground during the holidays.



In the “Norwegian Capital of Texas,” Clifton families celebrate the holidays with traditions that pioneering settlers brought with them from their homeland. Mingling the memories of the past with a new culture, The Norwegian Country Christmas Tour on December 2nd, 2017, reflects the richness of the heritage of Norse settlers, the gracious hospitality of a small Texas town, and the unique and flourishing culture of a progressive arts community.



On Friday evening, December 1st, a Lighted Christmas Parade through historic downtown Clifton heralds the opening of the 26th annual festival. The delightful procession includes floats, carolers, fire engines, and Santa’s arrival by Viking ship. Bosque Museum hosts a memorable Candlelight Reception following the Parade. The Museum houses the largest array of Norwegian artifacts in the South and Southwest, the Paleo-American Horn Shelter Exhibit, a remarkable collection of Native American artifacts, as well as early medical and education items, firearm and textile collections, and the log cabin home of museum founder Jacob Olson. The nearby Bosque Arts Center also welcomes guests on Friday evening for special performances, refreshments, artisan sales, and pictures with Santa among the spectacular holiday decorations.

On Saturday, December 2nd, tourists can acquire free copies of an event guidebook at local shops, purchase tickets at the Chamber of Commerce, and take a self-guided tour of a wide variety of events and interests. Clifton was officially deemed “The Norwegian Capital of Texas” in 1997, and the Norwegian Country Christmas Tour offers visitors a unique opportunity to glimpse the Texas pioneer era in the idyllic landscape in which numerous nationally-acclaimed artists find not only their inspiration but also their home.

Travel through the graceful valleys and limestone cliffs to discover where in 1854 a small group of Norwegian immigrants, including Cleng Peerson, “the Father of Norwegian Immigration to America,” established a new home in the beautiful, wild valley just outside of present-day Clifton, Texas. The descendants of many of these original settlers continue to play a vital role in preserving their traditions, their stories, and their farms and churches. Explore churches and homes bedecked in holiday splendor, where hosts and hostesses regale stories of settlers, traditions, and of developing and sustaining this eclectic community.



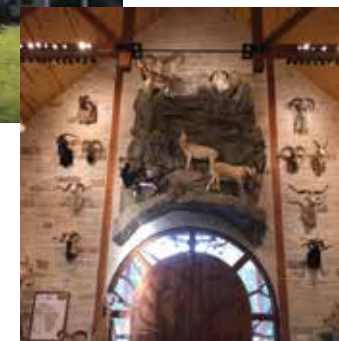
The Bosque Arts Center presents “The Arts of Christmas Expo” during the festival. Special performances and sales throughout the weekend add to the popular attraction of the permanent galleries. Beginning Friday evening and continuing through Saturday, visitors to the BAC can enjoy extraordinary talents in a myriad of art genres. Clifton has been designated by the Texas Legislature as a Cultural Arts District, and the Bosque Arts Center stands as the polestar of the fine arts community. The Bosque Arts Center Quilt Guild hosts an exquisite collection of quilts in the Bosque Arts Center’s Gallery.

Another popular venue to shop for gifts to tuck about the tree and souvenirs to remember your special day is Heritage Village. Here you will discover crafters and artisans displaying their wares of custom jewelry, wood carvings, toys, art, apparel, and more. Local specialties of cakes, cookies, jams, and candies delight shoppers... Through the years Heritage Village has attracted artisans and crafters from across the country to demonstrate and sell their unique creations.

Some favorite tour locations are The Rock Church, Our Savior’s Lutheran Church, and the Ringness House Museum. Visitors will have the opportunity to experience new sites as well. The newly opened Edwin Olsen Railroad Museum will be open for visitors in historic downtown. In addition to churches, shops, and area attractions, several spectacular private residences will be open to the public for the day. Nationally-acclaimed, hometown artist Martin Grelle and his wife Joyce graciously welcome visitors to their home in the Harmony Valley region. Breathtaking views, distinctive artwork, and stylish comfort blend in the stunning retreat. Mark and Jaclyn Brown invite guests to



cross the Bosque River Valley to their Trophy Room, reminiscent of the great halls of Europe. Visitors will marvel at the fabulous architecture and trophies on display in this unique destination.





Market at the Mill in downtown Clifton is featured as the 2017 Historic Downtown Business. Market at the Mill, owned by Lisa and Andy Horn, is a re-creation of Dansby Feed Mills and is a splendid event and shopping venue. Market at the Mill opened in May 2017 and has quickly become a popular site for concerts, receptions, and superb shopping.

A traditional Norwegian luncheon made from cherished family recipes will be served from 11 a.m. until 1:30 p.m. at Clifton Civic Center. In charming downtown Clifton, shoppers can enjoy galleries, boutiques, antique shops, free horse-drawn carriage rides, live entertainment, dinner and drinks, and a visit from Santa Claus. Enjoy a fascinating and entertaining day in Clifton at the Norwegian Country Christmas Tour.

*Family Owned & Operated
Serving Central Texas
Since 1964*



**We Service ALL
Makes & Models!**

TIRES, BATTERIES, ALIGNMENT, ETC.

www.GloffFord.com
1-800-659-6632
Clifton, TX

Velkommen and God Jul!



Clifton's Culinary Scene is **COOKING!**

The diversity of Texas—its geography, history, and heritage—can be savored in its cuisine. Not strictly Southern or Southwestern, Texas cooking is deeply rooted in its *mélange* of explorers and pioneers and the environs in which they settled. From the piney forests to the sprawling prairies and along the vast coastline of the Gulf of Mexico, local specialties highlight the available resources and the flavors that settlers imported.

Clifton's culinary scene is no exception. The Texas staples of chili, chicken-fried steak, and enchiladas are as popular as burgers or biscuits. But what may surprise visitors is the wide selection of distinctive dining options in such a small town.

The ingredients for sumptuous servings were always here. Beef, game, fish, and an abundance of fresh fruits and vegetables are favored fare in this town planted by farmers and ranchers. Growing up picking peaches, pecans, and berries, shelling peas and snapping beans, serving a harvest gathered from the morning garden has fueled an appetite for the incomparable flavors of the freshest ingredients. Families and friends gather often, generation after generation, preparing traditional handmade sausages, lutefisk, tamales, and more. In a close-knit community regularly sharing a table at a reunion, church social, or supper club, recipes and advice are passed around like salt and pepper. Occasionally a side order of friendly competition is served.

As Clifton flourished, a merging of ethnic influences began to season local dishes. As in its genesis, newcomers arrive with unique culinary elements and styles. Soon the fusion of the past and present provide a perfect marinade for savory selections. Certainly the era has ushered in exposure to a bounty of cultural cuisines and the availability of specialty foodstuffs, but closer inspection reveals a plethora of particular palates among locals.



Perhaps Clifton's passion for the arts, for satisfying the senses with beautiful things, for experimenting with resources, and for perfecting skills has nourished an evolution from simple pioneer foods to dining fare that rises to the culinary arts. An increasingly mobile population that has developed new tastes creates an audience for creativity, and restaurateurs have happily seized upon the opportunities. The mosaic of settings and seasonings represents the increasing diversity of the community itself. Fear not, you can still order up a slab of mouthwatering ribs or a mound of fried catfish; but Chinese, Italian, French, and farm-to-table fare are just around the corner.



And while you're here, stay awhile. You'll find the pace is slower... like a Texas drawl. Folks tend to enjoy a good visit and nourish the spirit as well as the body at mealtime. Many local eateries embrace and encourage leisurely dining, regular gatherings, and communal tables. Studies reveal that sharing meals strengthens community bonds and fosters creativity and democracy. Annual feasts and daily lunch crowds bolster this concept. The joy of deep connections fortified to the tune of forks on plates draws folks together time and again. Politics, birth announcements, and crop reports are dished up over morning coffee and afternoon sundaes; histories are echoed, and futures are framed.



Discover Clifton's smorgasbord of dining options! From cafes and delis to fine dining and food trucks, Clifton serves up something for everyone. Sit a spell and relish the refreshment.

For a list of Clifton eateries, visit "Eat Shop Stay" on page 31. Upcoming feasts and festivals can be found in "Clifton Community Calendar" on pages 5-7. Feed your creative side and sharpen your skills by joining the Culinary Club at Bosque Arts Center; for contact information, see the Members Directory.

Chamber Member UPDATES

Brooks Wealth Advisors – Stacy Brooks has transitioned from Edward Jones Investments to Brooks Wealth Advisors as a Raymond James financial advisor and branch manager, opening a new location at Highway 6 and FM 219 in Clifton.

Clifton Home Furnishings moved to their new location in Meridian this summer. Now **Meridian Home Furnishings**, they have more space and more furniture and décor to choose from. Stop by the new showroom at 103 South Main, Meridian, Tuesdays through Saturdays from 9:00 a.m. to 5:00 p.m.

Edward Jones Investments introduces Kenneth W. Mills as the new Clifton branch financial advisor. Mills is happy to be returning to Central Texas, meeting the Clifton community, and assisting with financial goals and services.

Whisk of Elegance – Two member business have joined creative forces to cater to Clifton and the surrounding area. Curtis Wiethorn is hanging up his apron and stepping into an advisory position for the newly formed "Whisk of Elegance" catering business. Jen Ellis of Your Mama's Catering, along with partners Carole Moore and Myca Downy, will provide Curtis' signature dishes along with new culinary creations.



First United Methodist Church

303 S. Avenue E • Clifton, TX 76634



"At First United Methodist Church
You can partner with God
in love, growth,
and service to others."

Christmas Season Special Events!

6th Annual Cookie Stroll –

Saturday, December 2, 8:00 am to 3:00 pm. Specialty homemade Christmas treats, cookies and candies. We give you a box, you fill it to your heart's content. We weigh it and you pay \$7 per pound. All funds raised benefit Clifton Angel Tree Ministry.

Christmas Cantata

"What Kind of Throne" –

Friday, December 15 at 6:00 pm
Sunday, December 17 at 10:30 am

Christmas Eve Communion and Candlelight Service –

Sunday, December 24 at 7:00 pm

254-675-3984 • fumccifton.com

Clifton Chamber Ribbon Cutting



The Clifton Chamber of Commerce would like to congratulate Windmill Cafe!

The Clifton Chamber of Commerce would like to congratulate Windmill Cafe on their Grand Opening on September 18, 2017. What makes Windmill more than a cafe is that they will provide programming for those who are 55 or better. Programming will include opportunities such as exercise classes, art instruction, educational speakers, musical entertainment, basic computer help, and much more.

Windmill Cafe

1604 W. 9th St.
Clifton, TX 76634
254-675-4653

Hours:

Monday-Friday 6:30am to 2:30pm
Breakfast served 7:00am to 10:00am
Lunch served 11:00am to 2:00pm



**BETTER
TOGETHER.**

The companion discount. Combining auto and home policies is another way to lower your insurance premium. Call to see how much you could save, starting with a **FREE 360 Review®** of your current coverage.

Kathy Winters

Krystal Pruett-Harper

318 W. 5th St.
Clifton, TX 76634
254.675.6456



**TEXAS
FARM
BUREAU
INSURANCE®**
AUTO / HOME / LIFE

Coverage and discounts are subject to qualifications and policy terms, and may vary by situation.
© 2017 Texas Farm Bureau Insurance Companies BOS0917

Discover Clifton • Winter 2017

COME AND SEE US FOR CYLINDER FILLING

STAR TEX



PROPANE, INC.

406 S. Ave. G
Clifton, TX 76634



254-675-1714 or 888-675-1714

**Monday thru Friday 8AM-5PM
Saturday 8:30AM-12:30PM**

Ken's Auto Supply

254-675-8100
920 N. AVENUE G • CLIFTON, TX 76634
M - F 7:30a - 5:30p • Saturday 8a - 12p • Closed Sunday

Ken's Auto Supply

SERVICE IS THE DIFFERENCE. 

Auto Value
Parts Stores

STOP BY FOR ALL YOUR AUTOMOTIVE NEEDS!



Now Open

Windmill Cafe

Monday - Friday
6:30am to 2:30pm
Breakfast served 7am to 10am
Lunch served 11am to 2pm

254-675-2263
1604 W. 9th St., Clifton
lutheransunset.org/windmill-cafe

Gourmet Dining & Programming for those 55+



HOT
Winner of Choice 2017
WINNER

Welcome Home

RAINBOW RETIREMENT COMMUNITY
101 S. AVE. Q, CLIFTON, TX
254-675-6785

- Full-sized kitchen with appliances
- Washer/dryer or on-site laundry
- Monthly housekeeping
- Apartment maintenance
- Attached garage or covered parking
- Scheduled transportation
- Social, recreational and educational activities
- Fitness center with scheduled exercise classes and much more!

www.LutheranSunset.org

INDEPENDENT LIVING, ASSISTED LIVING, LONG-TERM CARE,
COMPANION SERVICES, HOSPICE

BIG BUCK CONTEST

OVER \$5,000 IN PRIZES

\$25 ENTRY FEE

DIVISIONS:

- Open
- Bosque County & adjacent counties

SIGN UP FOR CONTEST AT:

Clifton Chamber of Commerce
Clifton Feed & Service—Clifton
Keith's Ace Hardware—Clifton
Mr. Ed's—Meridian
Hat Creek Taxidermy—Meridian
Velocity Vehicles—Whitney

Online –
<http://enteronline.com/CliftonBigBuck/Default2.aspx>

SPONSORS:

- Amerigas
- BJ's Western Wear
- Citizens State Bank
- Clifton Feed & Service
- Clifton Lion's Club
- Cutting Edge
- S
- First Security State Bank
- George Boutwell
- Hat Creek Taxidermy
- Jim's Package
- Keith's Ace Hardware
- Meridian Frozen Food
- MVP Livestock
- Parkers Lumber
- TNMP

For more information contact the Clifton Chamber of Commerce 254-675-3720

Over 43,000 surcharge-free ATM locations!

Our customers now have access to over 43,000 surcharge-free ATMs worldwide. That is twice as many as America's "largest" bank.

It's easy to never pay an ATM surcharge again.

FSSB is a member of the Allpoint ATM Network.



Real Time Internet Banking
Bill Pay
Debit Cards



First Security State Bank

Made in Texas, Stayed in Texas

CLIFTON: 1115 W. 5th (254) 675-2265 • CRANFILLS GAP: 307 Third St. (254) 597-2286
MERIDIAN: Hwy 6 & 22 (254) 435 9955 • WHITNEY: 1201 N. Brazos (254) 694 3476

WWW.FSSBTEXAS.COM



Bosque Supply

Locally Owned and Operated Since 1985



For All Your Metal Building Supplies

- Large Selection of Culvert Pipes
- Residential Metal Roofing meets insurance discount requirements
- Structural Steel
- All trim custom-built to meet your needs
- Square Tubing
- Cee Purlins

1207 West FM 3220 • Clifton, TX • (254) 675-6553 • (800) 433-5495
BosqueSupply.com • email: BosqueSupply@hotmail.com

CLIFTON CHAMBER OF COMMERCE

BIG BUCK RAFFLE

1ST PLACE
2017 POLARIS SPORTSMAN 570
SAGE GREEN
est. value \$6,700.00

2ND PLACE
YETI 35 COOLER
WHITE
est. value \$299.00

\$100 PER TICKET
Maximum tickets sold not to exceed 100.
Drawing to be held January 8, 2018
— or —
when all tickets are sold.
For more information, contact:
Clifton Chamber of Commerce
115 North Ave.D
Clifton TX 76634
254-675-3720

**PURCHASE
YOUR
TICKETS
NOW!**

Peace Lutheran Church

Hwy 219, Downtown Clifton
330 West 5th Street
Clifton, Texas



Worship 10:45
Sunday School 9:30

North American Lutheran Church

Come as you are!

(254) 675-8823

peacelutheran1@centurylink.net

thenalc.org

Big city medical care. Small town hospitality.

From our family medical clinics to 25-bed hospital, operating suite, physical therapy, nursery, and Trauma 4 ER, choosing Clifton means the utmost medical care for all the years of your life. Learn more at gwhf.org.



A
BREATH

OF FRESH AIR

"I finally have my place in the country.
Lone Star Ag Credit helped me finance
my piece of Texas."

CHARLES GREEN | 5G LAND & CATTLE CO.
Member Since 1998

Visit LoneStarAgCredit.com or call
your local Waco office at 254.772.6905
to connect with a loan officer near you.

LONE STAR

AG CREDIT

FINANCING YOUR PIECE OF TEXAS

FINANCING FOR:
RECREATIONAL PROPERTY
RURAL HOMES | RURAL REAL ESTATE
AGRIBUSINESSES | EQUIPMENT
FARM OR RANCH OPERATIONS





3730 FRANKLIN AVE.
WACO, TEXAS
254-752-0376

LOCALLY OWNED
& OPERATED FOR
38 YEARS

WE WANT TO BE
YOUR COPIER
COMPANY



CLIFTON
TEXAS

Clifton Chamber of Commerce Membership

New 2017 Clifton Chamber of Commerce Memberships run from January 1st to December 31st and the directory is published three times per year. If you are not currently listed in this issue, send in your membership application as soon as possible to be listed in the next directory and receive new and exciting Chamber benefits. For more information, please call the Chamber office at (254) 675-3720.

PLATINUM Membership

BCP Real Estate
Calpine Corporation
Citizens State Bank
Screen Door Inn
Texas Safari Ranch

GOLD Membership

Atmos Energy
Bedrock Concrete Construction, LLC
Bosque Supply CompañyBreaking
Breaking Bread Bakery & Deli
Brookshire's Food & Pharmacy
Clifton Feed & Service
First Security State Bank
Goodall-Witcher Hospital
Authority
J & H Insurance Services
Lutheran Sunset Ministries
Market at the Mill
Sinclair
Texas-New Mexico Power
The Cell Block
Velkommen Inn

SILVER Membership

A6 Gas & Market
Albrecht's Pharmacy
Bosque Resort/Motel
Chicken Express
CLIFTEX Theatre
Clifton Funeral Home
Divine Living Assistance
Dynamic Family Dentistry
FCS Construction
First National Bank of
Bosque County
First Presbyterian Church
5-Five
Gearech
Kindred Hospice
Kay & Bob Lane
Richard D. Lundberg, PC
McDaniel Landscapers, Inc.
One Eleven Cycle
Promit/Texas WebMarketing
Rountree Appliance & Electronics

Steven L. Regan, DDS
Three Mountain Retreat

Accountants/Auditors/ Bookkeepers

Gerald Nelson P.C.
Gerald Nelson
3202 CR 4145 ~ Cranfills Gap
(254) 597-0240

Richard D. Lundberg, P.C.
Rick Lundberg
714 W. 5th St. ~ Clifton
(254) 675-8635
rdlundberg@lundbergcpa.com
www.lundbergcpa.com

Advertising/Signs/Ad Specialties

Atkins Design Services
Karen Atkins
1488 CR 4195~ Clifton
atkinsdesignservices@gmail.com

Award Specialties

431 Lake Air ~ Waco
(254) 776-0022

Axiom Advertising

Chris Schmid
524 Esther St. ~ Waco
(254) 776-1288
Chriss@cdpaxiom.com
www.cdp-axiom.com

Clifton Record

Brett Voss
310 W 5th St. ~ Clifton
(254) 675-3336
ads@cliftonrecord.com
www.cliftonrecord.com

Integ

4500 Speight Ave.~ Waco
(254) 754-5636
www.integdoes.com

Our Community Directory

D. Cooper
2138 East Main St. ~ Snellville, GA
(912) 805-4879
ouryp@att.net

Promit/Texas WebMarketing

Shayne Embry
213 N. Avenue G ~ Clifton
(254) 675-3678
sembry@promit.com
www.texaswebmarketing.com

SCM

8439 State Hwy 6 ~ Waco, TX
(254) 230-1110
brad@scmpromos.com
www.scmpromos.com

Signature Signs

Jan Eymann
1220 N. Brazos ~ Whitney
(254) 694-4214
jan@txun.net

Airport/Aircraft Maintenance

Clifton Aero
Tim & Jeanni Talley
421 FM 3221 ~ Clifton
(254) 675-3771
cliftonaero@digitex.net
www.cliftonaero.com

Animal Supplies/Grooming/ Kennels

BARK

Whitney Smith
(254) 675-0089
adopt@barkrescue.org
www.BARKRESCUE.org

Clifton Feed & Svc. Center Inc.

Scott Conrad & Sherry Schulze
203 E. 5th St. ~ Clifton
(254) 675-3416
cliftonfeed@gmail.com
www.cliftonfeed.com

MVP Livestock Supplement

Paul Orwig
307 N. Avenue C ~ Clifton
(254) 744-2885
paulorwig@mvptubs.com
www.mvptubs.com

River's Bend Doggie Drop Inn

Helen Hubler
P.O. Box 228 ~ Clifton
(254) 675-4936
doggiedropinn2@gmail.com
www.doggiedropinn.com

Antiques

Bosque County Emporium

Tammy Bruno or Samantha Ramsey
121 N. Avenue D ~ Clifton
(254) 675-8133
bosquecountyemporium@gmail.com

Clifton Antique Mall

Shelba Bland
206 W. 5th St. ~ Clifton
(254) 675-2300

Crazy M

Paula Mohan
219 N Avenue D ~ Clifton
(254) 744-5499
Paula@paulamohan.com
www.paulamohan.com

Apartments

Bosque Village Apartments

110 S. Avenue M ~ Clifton
(254) 675-2205
bosquevillage@integrapeak.com

Appliance/Repair

Rountree Appliance & Electronics

Michael Rountree
815 N. Avenue G ~ Clifton
(254) 675-3515
www.rountreeappliance.com

Artists/Art Galleries

Betty Graham Art Studio

(254) 675-3211
graham.crackers@sbcglobal.net

Bosque Arts Center

Jane Scott
215 College Hill ~ Clifton
(254) 675-3724
office@bosqueartscenter.org
www.bosqueartscenter.org

Bruce Greene Art

(254) 675-2424
www.brucegreeneart.com

George Hallmark

www.georgehallmark.com

Grelle's Studio

(254) 675-3143
martingrelle@hughes.net

L & J Antiques & Art

117 Bison Rd ~ Valley Mills
(254) 932-5551
www.fineart-byldl.com

LLV Studio

Lloyd Voges
P.O. Box 98 ~ Clifton
(254) 723-3158
ltvoges@gmail.com
www.llvstudiolloydvoges.com

Mike Irvin Art

Mike Irvin
(254) 675-8793
mirvin@hughes.net
mikeirvinart.com

Texas Collection

George Boutwell
(254) 675-6676
art@gboutwell.com
www.gboutwell.com

Tony Eubanks

(254) 675-8344
tonyeubanks@clearwire.net
www.tonyeubanks.com

Treaty Oak Gallery

Dana Ferguson
126 N. Avenue D ~ Clifton
(254) 675-6126
dana@treatyoakart.com
www.treatyoakart.com

Walker Bronze

Jack & Fran Walker
P.O. Box 145 ~ Clifton
(254) 675-6767
walkerbronze@yahoo.com
www.jackwalkerbronze.com

Attorneys/Law Services

Patricia Coy & Associates, LLC

Patricia Coy
815 W. 5th St. ~ Clifton
(254) 675-8663

Automotive, Motorcycle & Equipment Sales/Supplies/Repair

Clifton Fix & Rent

Addie Fouts
807 N. Avenue G ~ Clifton
(254) 675-1218

Gloff Ford LLC

David Gloff
1206 N Avenue G ~ Clifton
(254) 675-8369
davidgloff@glofford.com
www.glofford.com

Ken's Auto Supply

Steve Roseberry, Manager
920 N. Avenue G ~ Clifton
(254) 675-8100
stever@4mparts.com

Mike Schmidt Motors

Mike Schmidt
410 N. Avenue G ~ Clifton
(254) 386-7721
MikeSchmidt1@centurylink.net
www.MikeSchmidtMotors.com

One Eleven Cycle

Jeremy Hymmer
511 N. Avenue G ~ Clifton
(254) 675-4111
jeremy@111cycle.com
www.111cycle.com

Ranch House Tire & Service

Randy Benfer
209 N. Avenue G ~ Clifton
(254) 675-8828
randybenfer@yahoo.com

Banks/Financing/Investments

Brooks Wealth Advisors Co, LLC

Stacy Brooks
103 N. Avenue G ~ Clifton
(254) 675-8000
stacy.brooks@raymondjames.com

Capital Farm Credit

Shawna Ranly, Mike Ferguson
702 W. 5th St. ~ Clifton
(254) 675-8698
Shawna.Ranly@capitalfarmcredit.com
michael.ferguson@capitalfarmcredit.com
www.capitalfarmcredit.com

Citizens State Bank

Connie Terry
505 W. 5th St. ~ Clifton
(254) 675-2211
cterry@citizensstatebanktx.com
www.citizensstatebanktx.com

Edward Jones Investments

Kenneth Mills
715 S. Avenue G ~ Clifton
(254) 675-3023
Kenneth.Mills@edwardjones.com
www.edwardjones.com

First National Bank

Bryant Schuetz
1203 N. Avenue G ~ Clifton
(254) 675-6570
bryant@fnbbosque.com
www.fnbbosque.com

First Security State Bank

Drew Leigh
1115 W. 5th St. ~ Clifton
(254) 675-2265
dleigh@fssbtexas.com
www.fssbtexas.com

First Southwest Company

Lee Donner
505 W. 5th St. #280 ~ Clifton
(254) 675-3552

Lone Star Ag Credit

Aaron Nors
13525 Sandalwood Dr. ~ Waco
(254) 772-6905
aaron.nors@lonestaragcredit.com
www.lonestaragcredit.com

New York Life

5400 Bosque Blvd. Ste. 308 ~ Waco
Kersten Goodwin
(254) 709-8111
kagoodwin@ft.newyorklife.com

Beauty/Hair/Nails/Tans

Dudes N Dolls

Barbara Van Tassel
222 N. Avenue D ~ Clifton
(254) 400-8332
dudesndolls720@gmail.com

The Salon on Main

Bill Pruett
112 Avenue D ~ Clifton
(254) 675-1101
thesalononmain@gmail.com

Beverages

A6 Gas & Market

Ray Bhai
2003 W. 5th St. ~ Clifton
(254) 675-1788
Raheelbhai1@gmail.com

Highlander Spirits

Brian & Melanie Horeftis
9376 Hwy 6 ~ Meridian
(254) 435-9177
Highlanderspirits2015@yahoo.com

Jim's Package Store

Thomas Alumootil
2577 FM 219 ~ Clifton
(254) 675-6308

Red Caboose Winery

Gary McKibben
903 S. Avenue G ~ Clifton
(254) 675-0099
1147 CR 1110 ~ Meridian
(254) 435-9911
garyredcaboose@hotmail.com
www.redcaboosewinery.com

Building Contractors/Construction

Bedrock Concrete Construction LLC

Steve Lightford
(254) 479-0097

Bosque Timber Stone and Steel

John Fowlkes
603 N. Avenue G ~ Clifton
(254) 723-8272
BTSS2016@gmail.com
www.bosquestone.com

Central Texas Plumbing Solutions

Chris Sproles
307 Lake Air Drive ~ Waco
chris@centraltexasplumbing.com
www.centraltexasplumbing.com

FCS Construction

Joey Cross
401 PR 2625 ~ Clifton
(214) 843-6656
jcross@friscoccs.com
www.friscoccs.com

MKG Construction, Ltd

Marvin Grelle
1234 CR 4195 ~ Clifton
(254) 675-3572
marvin@mkgconstruction.net
www.mkgconstruction.net

Martin Marietta, Mid-Central Texas District

Sherry Smith
7901 Fish Pond Rd 1st Floor ~ Waco
(254) 772-9992
Sherry.Smith@martinmarietta.com
www.martinmarietta.com

Toby's Handyman & Construction Service

Toby Sowers
P.O.Box 543 ~ Clifton
(254) 978-1735
tobyshandyman@yahoo.com
www.tobyshandyman.com

Building Supplies/Hardware

Bosque Supply Company

Bill & Betty Murdoch
1207 FM 3220 ~ Clifton
(254) 675-6553
bosquesupply@hotmail.com
www.bosquesupply.com

Bosque Timber Stone & Steel

John Fowlkes
603 N. Avenue G ~ Clifton
(254) 723-8272
BTSS2016@gmail.com
www.bosquestone.com

Keith's Ace Hardware

Larry Musselman
604 N. Avenue G ~ Clifton
(254) 675-6513
lmusselman@keithhardware.com
www.keithhardware.com

Leon's Floor Covering

Mike Prescher
302 W. 5th St. ~ Clifton
(254) 675-8686
Lfc1948@gmail.com
www.leonsfloorsclifton.com

Parker Lumber

Doug Fehler
1214 N. Avenue G ~ Clifton
(254) 675-2220
dfehler@parkerlumber.net

**Cable/Internet/Satellite/
Computers**

CC Etc...

Sid Walker
803 N. Avenue G ~ Clifton
(254) 253-0100

SOA Connect Inc.

Dorian Salmon
410 S. Avenue G ~ Clifton
(254) 675-2168
Dorian@SOA-connect.com
www.SOA-connect.com

**Catering/Event
Coordinators**

Bosque Resort Restaurant & Bar

Stuart & Rebecca Parsons
341 State Hwy. 22 ~ Laguna Park
(254) 622-2034
brmgmt@yahoo.com

Bunkhouse BBQ

Ricky and Pam Countryman
1003 S. Avenue G ~ Clifton
(254) 675-8409

Chicken Express

Jay McConathy
621 W. 5th St. ~ Clifton
(254) 675-1718
www.chickene.com

Market at the Mill

Lisa Horn
317 W 3rd St ~ Clifton
(254) 715-8160
www.marketatthemillclifton.com

Whisk of Elegance

Jen Ellis
P.O. Box 154 ~ Kopperl
(254) 775-4333
whiskofelegance@gmail.com
www.whiskofelegance.com

Chamber of Commerce

Clifton Chamber of Commerce

Paige Key
115 N. Avenue D ~ Clifton
(254) 675-3720
info@cliflontexas.org

**Chiropractors/Massage
Therapy/Acupuncture**

**Bosque Valley Chiropractic &
Acupuncture**

Dr. Lee Bergren &
Joan M Bergren, LAC
230 N. Avenue D ~ Clifton
(254) 675-3078
whitneycc05@yahoo.com

Churches

Bosque County Cowboy Church

Tater Paschal, Pastor
7023 SH6 ~ Clifton
(254) 675-8858
www.bosquecountycowboychurch.com
cowboychurchbc@yahoo.com

Clifton Bible Church

(254) 707-1076

Clifton Church of Christ

203 S. Avenue G ~ Clifton
(254) 675-3801
cliflontxcoc@gmail.com
www.cliftonchurch.org

Clifton Ministerial Alliance

Dr. Jerry Smith
(254) 675-8824

First Baptist Church

Jerry Smith, Pastor
106 S. Avenue G ~ Clifton
(254) 675-8824
fbclifton@fbclifton.com
www.fbclifton.com

First Presbyterian Church

Clint Schofield, Pastor
211 S. Avenue G ~ Clifton
(254) 675-8105
office@fpccclifton.com
www.fpccclifton.com

First United Methodist Church

Rev. Mary Gean Cope, Pastor
302 S. Avenue E ~ Clifton
(254) 675-3984
www.fumclifton.com
fumclifton@embarqmail.com

Holy Angels Catholic Church

1915 W. 5th St ~ Clifton
(254) 675-8877
www.holyangelsclifton.org

Immanuel Lutheran Church

911 W. 3rd St ~ Clifton
(254) 675-3281

The Lighthouse

3653 S. Hwy. 6 ~ Clifton
(254) 723-0081

Our Savior's Lutheran Church

Bill Metting, Pastor
152 CR 4145 ~ Clifton
(254) 675-3962
oslcnorse1869@gmail.com
www.OurSaviorsnorse.org

Peace Lutheran Church

Rev. Wendy Berthelsen
330 W. 5th St. ~ Clifton
(254) 675-8823
peacelutheran1@centurylink.net

Trinity Lutheran Church

Pastor Clayton McCord
803 W. 3rd St ~ Clifton
(254) 675-8815
www.TrinityLutheranClifton.org
trinityclifton803@gmail.com

Zion United Church

Pastor Josh Jordan
1411 FM 219 ~ Clifton
(254) 675-3599
www.zionunitedchurchwomack.com
jjordan.womackchurch@gmail.com

Cleaning Services

L2 Solutions

Lisa Lopez
(254) 366-5886
L2solutions.tx@gmail.com

**Conference/Event/Meeting
Facilities**

Bosque Arts Center

Jane Scott
215 College Hill ~ Clifton
(254) 675-3724
office@bosqueartscenter.org
www.bosqueartscenter.org

Bosque Museum

Barbara Aars
301 S. Avenue Q ~ Clifton
(254) 675-3845
bosquemuseum@gmail.com
www.bosquemuseum.org

Flint Creek Country Estate

Jackie Murski
849 CR 2365 ~ Meridian
(214) 277-4038
flintcreekcountryestate@gmail.com
www.flintcreekcountryestate.com

Texas Safari Ranch

192 PR 4293 ~ Clifton
(214) 384-3000
www.texasafari.com

Three Mountain Retreat

Stan & Linda Gary
1648 FM 182 ~ Clifton
(254) 675-3188
stan.linda@threemountainretreat.com
www.threemountainretreat.com

Consulting

SOA-Connect, Inc.

Dorian Salmon
410 S. Avenue G ~ Clifton
(254) 675-2168
Dorian@SOA-Connect.com
www.SOA-Connect.com

Star Business Partners

Robert W. Pollan
P.O. Box 261 ~ Clifton
(254) 260-5727
rpollan@starbusinesspartners.com
www.starbusinesspartnersllc.com

Copiers/Printers

CTWP

3730 Franklin Avenue ~ Waco
(254) 752-0376
rburnett@ctwp.com
www.ctwp.com

Dentists

Dynamic Family Dentistry

Dee Anna Walker, D.D.S.
302 S. Avenue Q ~ Clifton
(254) 675-3518
dynamicfamilydentistry@gmail.com

Steven L Regan, D.D.S PLLC

102 Posey Avenue ~ Clifton
(254) 675-8301
srtoothdoc@aol.com

**Dining/Fast Food/
Restaurants**

A6 Gas & Market

Ray Bhai
2003 W. 5th St. ~ Clifton
(254) 675-1788
Raheelbhai1@gmail.com

Bosque Resort Restaurant & Bar

Stuart & Rebecca Parsons
341 State Hwy. 22 ~ Laguna Park
(254) 622-2034
brmgmt@yahoo.com

Breaking Bread Bakery & Deli

Paul & Charisse Morales
120A N. Avenue D ~ Clifton
(254) 675-1213
breakingbread120@gmail.com
www.breakingbread120.com

Bunkhouse BBQ

Ricky & Pam Countryman
1003 S. Avenue G ~ Clifton
(254) 675-8409

Chicken Express

Jay McConathy
621 W 5th St. ~ Clifton
(254) 260-5727
www.chickene.com

China Wok

Nancy Ni
210 W. 5th St. ~ Clifton
(254) 675-8800
Huili772005@yahoo.com

Corner Drug Cafe

Nena Rieser
102 N. Avenue D ~ Clifton
(254) 265-7737
CornerDrugCafe@gmail.com
F/B@cornerdrugcafe

Dairy Queen

Darolynn Webster
Joe Chapin
311 N. Avenue G ~ Clifton
(254) 675-3003
darolyn.webster@richardsondq.com

Red Caboose Winery

Gary McKibben
903 S. Avenue G ~ Clifton
(254) 675-0099
1147 CR 1110 ~ Meridian
(254) 435-9911
garyredcaboose@hotmail.com
www.redcaboosewinery.com

Sinclair

Kaye Robinson Callaway
215 W. 3rd St. ~ Clifton
(254) 675-8888
sinclaircliflontexas@gmail.com
www.sinclairrestaurant.com

Windmill Café

1604 W. 9th St. ~ Clifton
(254) 675-2263
www.lutheransunset.org/windmill-cafe

Education

**Central Texas Astronomical
Society**

Aubrey Brickhouse, Pres.
14801 FM 182 ~ Clifton
(254) 326-1027
ctaswebmaster@centexastronomy.org
www.centexastronomy.org

Clifton I.S.D.

Rhoda White, Superintendent
1102 Key Avenue ~ Clifton
(254) 675-2827
www.cliftonisd.org

Hill College

Jamie Dunlap
112 Lamar Dr ~ Hillsboro
254-659-7770
jdunlap@hillcollege.edu
www.hillcollege.edu

Norwegian Society of Texas

Ed Rieser
P.O. Box 114 ~ Cranfills Gap
www.norwegiansocietyoftexas.org

The Silo Project

Dr. Deb Tolman
P.O. Box 57 ~ Clifton
(503) 287-7980
deb@debtolman.com
www.debtolman.com

**Electronics/Computers/
Media Support**

CC Etc...

Sid Walker
803 N. Avenue G ~ Clifton
(254) 253-0100

Rountree Appliance & Electronics

Michael Rountree
815 N. Avenue G ~ Clifton
(254) 675-3515
www.rountreeappliance.com

**Wallace Sight & Sound
Productions, Inc.**

Matt & Miriam Wallace
Meridian
(214) 995-6695
info@wssp-inc.com
www.wssp-inc.com

Emergency Services

Bosque County Sheriff's Office

Anthony Malott
305 W. Morgan St. ~ Meridian
911, (254) 435-2362 or
(254) 435-2363
www.bosquesheriff.com

Clifton Police Department

Trace Hendricks
402 W. 3rd St. ~ Clifton
911 or (254) 675-6620
cliftonpd@cliftonpd.com
www.cliftonpd.com

Clifton Volunteer Fire Dept

Terry Boyle
P.O. Box 525 ~ Clifton
911 or (254) 675-8688
cliftonvfd@yahoo.com
www.cliftonvfd.org

Florists

Blossom Shoppe Etc...

Tracey Byrd
215 N. Avenue D ~ Clifton
(254) 675-3444 or (866) 675-3444
blossomshopetc@earthlink.net
www.blossomshopetc.com

Fuels

Myatt Fuels

Nick Myatt
202 N. Avenue B ~ Clifton
(254) 675-8107
contact@myattfuels.net
www.myattfuels.net

Star-Tex Propane

406 S. Avenue G ~ Clifton
(254) 675-1714
(888) 675-1714
www.startexpropane.com

Funeral Homes

Clifton Funeral Home

303 S. Avenue F ~ Clifton
(254) 675-8611
www.Cliftonfh.com
info@cliftonfh.com

Furniture

Art Wood Furniture

Terry Ehrhardt
245 CR 4275 ~ Clifton
(254) 717-7488

Meridian Home Furnishings

Lisa Lankford
103 S. Main ~ Meridian
(254) 855-3665
lisalankford96@yahoo.com

**Meredith Kate Fashions &
Furnishings**

Kathy Lightford
134 N. Avenue D ~ Clifton
(254) 744-8133
meredithkatefashions@gmail.com

Government

Brian Birdwell, State Senator

P.O. Box 1111 ~ Granbury
(817) 559-9585
brian@brianbirdwell.net
www.brianbirdwell.net

**DeWayne Burns,
State Representative**

Joy Davis
115 N. Avenue D ~ Clifton
(817) 645-3685

Bosque County Constable, Pct 2

Bryan Prescher
718 S. Avenue F ~ Clifton
(254) 675-4461

City of Clifton

Jim Heid, Mayor
403 W. 3rd St. ~ Clifton
(254) 675-8337
cliftoncity@clifontexas.us
www.cityofclifton.org

**Clifton Economic Development
Co. (EDC)**

115 N. Avenue D ~ Clifton
(254) 675-3720
www.cliftonedc.org

Royal Norwegian Consulate

General
3410 W. Dallas St. #100 ~ Houston
(713) 620-4200
cg.houston@mfa.no
www.norway.org/embassy/
houston

**Graphic Design/Printing/
Publishing**

Atkins Design Services

Karen Atkins
1488 CR 4195 ~ Clifton
(254) 386-7531
atkinsdesignservices@gmail.com

Integ

4500 Speight Ave. ~ Waco
(254) 754-5636
www.integdoes.com

Grocers/Food Suppliers

Breaking Bread Bakery & Deli

Paul & Charisse Morales
120A N. Avenue D ~ Clifton
(254) 675-1213
breakingbread120@gmail.com
www.breakingbread120.com

Brookshire's Food & Pharmacy

Bobby Taylor
900 FM 3220 ~ Clifton
(254) 675-3111
director_092@brookshires.com
www.brookshires.com

David's Super Market

614 S. Avenue G ~ Clifton
(254) 675-6345

Shopko

927 N. Avenue G ~ Clifton
(254) 675-2404
st202@shopko.com
www.shopko.com

Whisk of Elegance

Jen Ellis
PO Box 154 ~ Kopperl
(254) 775-4333
whiskofelegance@gmail.com
www.whiskofelegance.com

Guns

On Target!

James McCune
119 CR 1275 ~ Morgan
(575) 636-4719
JcMccune2@msn.com

**Gyms/Fitness Centers/
Dance**

Goodall-Witcher Fitness Ctr.

Lisa Lopez, Manager
101 Hillside Dr. ~ Clifton
(254) 675-7975
llopez@gwhf.org

**Healthcare Services/
Facilities**

Carter BloodCare

Clinton McCoy
206 Archway Drive ~ Woodway
(254) 297-4005
cmccoy@carterbloodcare.org
www.carterbloodcare.org

**Clifton Medical Clinic & Physician
Group**

201 Posey Avenue ~ Clifton
(254) 675-8621 or (254) 675-8367
www.gwhf.org

Divine Living Assistance

Jennifer Kidd
213 S. Bosque St. ~ Whitney
(254) 694-8614
divinelivingassistance@gmail.com

**Goodall-Witcher Hospital
Authority**

Adam Willmann
101 Posey Avenue ~ Clifton
(254) 675-8322
www.gwhf.org

Kindred Hospice

Crystal Meyer
510 N. Valley Mills Dr., Ste 402 ~
Waco
(254) 399-0963
www.kindredathome.com

Lutheran Sunset Ministries

Rodney Rueter
413 Sunset Avenue ~ Clifton
(254) 675-8637
rrueter@lutheransunset.org
www.lutheransunset.org

Home Repair/Improvement

Keith's Ace Hardware

Larry Musselman
604 N. Avenue G ~ Clifton
(254) 675-6513
www.keithhardware.com
lmusselman@keithhardware.com

Leon's Floor Covering

Mike Prescher
302 W. 5th St. ~ Clifton
(254) 675-8686
Lfc1948@gmail.com
www.leonsfloorsclifton.com

Parker Lumber

Doug Fehler
1214 N. Avenue G ~ Clifton
(254) 675-2220
dfehler@parkerlumber.net

Insurance Agencies

Aars & Nelson Insurance Agency, LP

Mike Anderson
205 W. 5th St. ~ Clifton
(254) 675-8601
agency@aarsandnelsoninsurance.com

J & H Insurance Services

Monica Rodriguez
505 W. 5th St. ~ Clifton
(254) 772-6074
monicar@jandhins.com
www.jandhins.com

New York Life

5400 Bosque Blvd, Ste. 308 ~ Waco
Kersten Goodwin
(254) 709-8111
kagoodwin@ft.newyorklife.com

Texas Farm Bureau

Kathy Winters
318 W 5th St ~ Clifton
(254) 675-6456
kwinters@txfb-ins.com

Jewelers/Jewelry Repair

David Marlin Jewelers

David Laramore
117 N. Avenue G ~ Clifton
(254) 675-4653 (GOLD)
laramore6975@gmail.com

Landscape/Lawn/Nursery

Grass Roots Lawn & Landscaping

Paul Stinnett
433 CR 4270 ~ Clifton
(254) 253-0246
Stinnett.Paul@yahoo.com

Keith's Ace Hardware

Larry Musselman
604 N. Avenue G ~ Clifton
(254) 675-6513
lmusselman@keithhardware.com
www.keithhardware.com

McDaniel Landscapers, Inc.

Shannon McDaniel
PO Box 149 ~ Clifton
(254) 675-3934 or (254) 716-0944
smcdaniel@mcDanielyardscaper.com
www.mcdanielyardscaper.com

Laundry/Dry Cleaning

American Inn

DM Patel
9307 Hwy 6 ~ Meridian
(254) 435-2851
bestvalueinnbuda@hotmail.com
www.americaninnmeridiantx.com

Don's Cleaners & Laundry

Don Harris
515 W. 3rd St. ~ Clifton
(254) 675-3115
dpharris1@mac.com

Library

Nellie Pederson Civic Library

Lewis Stansell, Director
406 Live Oak St. ~ Clifton
(254) 675-6495
cliftonlib@cliftontexas.us
www.cliftonlib.com

Livestock

Clifton Feed & Svc. Center Inc.

Scott Conrad & Sherry Schulze
203 E. 5th St. ~ Clifton
(254) 675-3416
cliftonfeed@gmail.com
www.cliftonfeed.com

Clifton Livestock Commission

Co. Inc.

Wayne Carroll
3199 State Hwy. 6 ~ Clifton
(254) 675-8657
wayne@cliftonlivestock.com
www.cliftonlivestock.com

Gary Creek Ranch

Wally & Punky Penberthy
1375 CR 4195 ~ Clifton
(254) 675-3387
walter.l.penberthy@gmail.com
www.besttrophywhitetail.com

Lodging

American Inn & RV Park

DM Patel
9307 Hwy 6 ~ Meridian
(254) 435-2851
american9307@yahoo.com
www.americaninnmeridiantx.com

BCP Loft

Sally Douglas
215 W. 5th St. ~ Clifton
(254) 675-2091

Bosque Resort Motel

Stuart & Rebecca Parsons
341 State Hwy. 22 ~ Laguna Park
(254) 622-2034
brmgmt@yahoo.com
www.bosquesort.com

Dahl House Guest Cottage

Dr. Terry Watson
410 N. Avenue M ~ Clifton
(214) 906-0245
www.dahlhousesidence.com

Flint Creek Country Estate

Jackie Murski
849 CR 2365 ~ Meridian
(214) 277-4038
flintcreekcountryestate@gmail.com
www.FlintCreekCountryEstate.com

Harris House Guest House

Damaris Neelley
2856 CR 3310 ~ Clifton
(254) 749-6292
damaris.neelley@gmail.com
www.harrishouseclifton.com

Screen Door Inn

Margaret Garcia
110 N. Avenue D ~ Clifton
(254) 675-7829
stay@screendoorinn.com
www.screendoorinn.com

The Cell Block

Kaye Callaway
120 Art Alley ~ Clifton
(254) 227-5656
stayatthecellblock@gmail.com
www.stayatthecellblock.com

Texas Safari Ranch

192 PR 4293 ~ Clifton
(214) 384-3000
www.texasafari.com

Three Mountain Retreat

Stan & Linda Gary
1648 FM 182 ~ Clifton
(254) 675-3188
stan.linda@threemountainretreat.com
www.threemountainretreat.com

Velkommen Inn

1215 N. Avenue G ~ Clifton
(254) 675-8999

Manufacturing

Byford Machine-Tool, Inc.

John Erickson
2038 St. Hwy 6 ~ Valley Mills
(254) 932-6111
john@byfordmachine.com
www.byfordmachine.com

Clifton Moulding Corp.

Alice Brewer
100 S. Avenue B ~ Clifton
(254) 675-8641
abrewer@cliftonmoulding.com
www.cliftonmoulding.com

Gearench

David Burden
4450 S. Hwy. 6 ~ Clifton
(254) 675-8651
dburden@gearench.com
www.gearench.com

Lhoist North America

Karen Brown
P.O. Box 473 ~ Clifton
(254) 675-8660
karen.brown@lhoist.com
www.lhoist.com

MVP Livestock Supplement

Paul Orwig
307 N. Avenue C ~ Clifton
(254) 744-2885
paulorwig@mvptubs.com
www.mvptubs.com

Maps

Community Matters

P.O.Box 5900 ~ Frisco
(972) 439-4140
www.CommunityMatters.com
(912) 805-4879

Movie Theaters

CLIFTEX Theatre

Rich & Leah Douglas
306 W. 5th St. ~ Clifton
(254) 675-1229
thecliftex@gmail.com
www.thecliftex.com

Museums

Bosque Museum

Barbara Aars
301 S. Avenue Q ~ Clifton
(254) 675-3845
bosquemuseum@gmail.com
www.bosquemuseum.org

Clifton Classic Chassis Auto Museum

Dr. Terry Watson
406 W. 5th St. ~ Clifton
(214) 906-0245
drtrw@aol.com
www.cliftonclassicchassis.org

Edwin Olsen Railroad Museum

204 N. Avenue E ~ Clifton
(254) 675-8337

The Ringness House Museum

Betty Tindall
7010 CR 309 ~ Cranfills Gap
(254) 597-2478
btindall500@gmail.com
http://ringnesshouse.org

Newspapers

Clifton Record

Brett Voss
310 W 5th St ~ Clifton
(254) 675-3336
ads@cliftonrecord.com
www.cliftonrecord.com

The Clifton Sheet

Nathan Diebenow
203 N. Avenue Q ~ Clifton
(214) 552-7201
diebenow@yahoo.com

Waco Tribune Herald

Stephanie Curry
900 Franklin Avenue ~ Waco
(254) 757-5757
www.wacotrib.com

Organizations

American Legion Post 322

401 E. 2nd St. ~ Clifton
(254) 675-8782

BARK

Whitney Smith
Hwy 6 ~ Clifton
(254) 675-0089
adopt@barkrescue.org
www.Barkrescue.org

Better Business Bureau

445 E. Cen. Tex. Exp., Ste. 1 ~ Harker Heights
(254) 755-7772 or (800) 759-6728
info@centraltx.bbb.org
www.waco.bbb.org

Bosque Arts Center

Jane Scott
215 College Hill ~ Clifton
(254) 675-3724
office@bosqueartscenter.org
www.bosqueartscenter.org

Bosque County AgriLife

Extension Office
104 S. Fuller St. ~ Meridian
(254) 435-2331
Bosque-txtamu.edu
www.bosque.agrilife.org

Bosque County Rotary Club

Anne West
701 CR 4100 ~ Meridian
(254) 597-2221
awest@bosqueservices.com

Bosque River Valley Chapter, NSDAR

Sue Fielden, Regent
(254) 675-2872
sfielden@embarqmail.com

CASA for the Cross Timbers Area, Inc.

Judy Walker
6556 Hwy 337 S ~ Stephenville
(254) 965-6610
casacta4kids@casactc.org
www.casacta.org

Central Texas Astronomical Society

Dean Chandler
14801 FM 182 ~ Clifton
(254) 326-1027
chandean1@outlook.com
www.centexastronomy.org

Clifton Lions Club

Al Herzog
(254) 675-3747

Clifton Ministerial Alliance

Jerry Smith
P.O. Box 529 ~ Clifton
(254) 675-8824

Clifton Main Street Forum

403 W. 3rd St. ~ Clifton
(254) 675-8337
cliftonmainstreet@cliftontexas.us
www.ci.clifton.tx.us

Norwegian Society of Texas

Ed Rieser
P.O. Box 114 ~ Cranfills Gap
www.norwegiansocietyoftexas.com

Royal Norwegian Consulate

General
3410 W. Dallas St. #100 ~ Houston
(713) 620-4200

Veterans of Foreign War Post 8553

David Conrad
P.O. Box 161 ~ Clifton
(254) 386-7570

Pest Control Services

Bosque Pest & Termite

Joe or Anne West
701 CR 4100 ~ Meridian
(254) 597-2221
awest@bosqueservices.com
www.bosqueservices.com

Pharmacies

Albrecht's Pharmacy

Clinton Albrecht, Gene Albrecht,
Sean Albrecht
506 W. 5th St. ~ Clifton
(254) 675-8398
adm@albrechtpharmacy.com
www.albrechtpharmacy.com

Brookshire's Food & Pharmacy

Bobby Taylor
900 FM 3220 ~ Clifton
(254) 675-3111
director_092@brookshires.com
www.brookshires.com

Plumbing

Central Texas Plumbing Solutions

Chris Sproles
307 Lake Air Drive ~ Waco
chris@centraltexasplumbing.com
www.centraltexasplumbing.com

Propane Services/Products

Myatt Fuels

Nick Myatt
202 N. Avenue B ~ Clifton
(254) 675-8107
contact@myattfuels.net
www.myattfuels.net

Star Tex Propane, Inc.

406 S. Avenue G ~ Clifton
(254) 675-1714
(888) 675-1714
info@startexpropane.com
www.startexpropane.com

Ranches

Cobb Properties

300 N. 3rd St. ~ Cranfills Gap
(254) 597-7200
Stefanie Cobb
(972) 989-5220
Tai Cobb-Klam
(254) 253-0157
cobbproperties@yahoo.com
www.cobbbranchproperties.com

Gary Creek Ranch

Wally & Punky Penberthy
1375 CR 4195 ~ Clifton
(254) 675-3387
Walter.l.Penberthy@gmail.com
www.garycreekranch.com

J-C Ranch

Charlie & Judy Blue
3833 Hwy. 6 ~ Clifton
(254) 675-3075
jcbblue@embarqmail.com

Real Estate/Title

BCP Real Estate

Rick & Sally Douglas
215 W. 5th St. ~ Clifton
(254) 675-3818
office@bosquecountyproperties.com
www.bosquecountyproperties.com

Bosque Cen-Tex Title, Inc

John & Mary Hastings
202 W. Morgan St. ~ Meridian
(254) 435-2722, (254) 435-2373
bosquetitlecompany@yahoo.com

Bosque Real Estate

Sharon Nisbet
100 N. Avenue G ~ Clifton
(254) 675-8092
sharon@givemeland.com
www.givemeland.com

Cobb Properties

300 N. 3rd St. ~ Cranfills Gap
(254) 597-7200
Stefanie Cobb
(972) 989-5220
Tai Cobb-Klam
(254) 253-0157
cobbproperties@yahoo.com
www.cobbbranchproperties.com

Recreation/Recreational Supplies

Bosque Valley Golf Course

Todd Clift
347 CR 1055 ~ Meridian
(254) 435-2692
todd.clift@energyby5.com

CLIFTEX Theatre

Rich Douglas & Leah Douglas
306 W. 5th St. ~ Clifton
(254) 675-1229
thecliftex@gmail.com
www.thecliftex.com

Gary Creek Ranch

Wally & Punky Penberthy
1375 CR 4195 ~ Clifton
(254) 675-3387
walter.l.penberthy@gmail.com
www.garycreekranch.com

On Target!

James McCune
119 CR 1275 ~ Morgan
(254) 775-4710
jcmccune2@msn.com

Retirement/Assisted Living

Lutheran Sunset Ministries

Rodney Rueter
413 Sunset Avenue ~ Clifton
(254) 675-8637
rrueter@lutheransunset.org
www.lutheransunset.org

Shopping/Gifts

Albrecht's Pharmacy

Clinton Albrecht, Gene Albrecht,
Sean Albrecht
506 W. 5th St. ~ Clifton
(254) 675-8398
admin@albrechtspharmacy.com
www.albrechtspharmacy.com

Blossom Shoppe Etc...

Tracey Byrd
215 N. Avenue D ~ Clifton
(254) 675-3444 or (866) 675-3444
blossomshopetc@earthlink.net
www.blossomshopetc.com

B J's Western Wear

Julie Conley
410 W 5th St. ~ Clifton
(254) 675-8113
juliec210@centurylink.com

Bosque County Emporium

Tammy Bruno or Samantha Ramsey
121 N. Avenue D ~ Clifton
(254) 675-8133
bosquecountyemporium@gmail.com

Clifton Antique Mall

Shelba Bland
206 W. 5th St. ~ Clifton
(254) 675-2300

Clifton Feed & Svc. Center Inc.

Scott Conrad & Sherry Schulze
203 E. 5th St. ~ Clifton
(254) 675-3416
cliftonfeed@gmail.com
www.cliftonfeed.com

Meridian Home Furnishings

Lisa Lankford
103 S. Main ~ Meridian
(254) 855-3665
lisalankford96@yahoo.com

Crazy M

Paula Mohan
219 N. Avenue D ~ Clifton
(254) 744-5499
paula@paulamohan.com
www.paulamohan.com

David Marlin Jewelers

David Laramore
117 N. Avenue G ~ Clifton
(254) 675-4653 (GOLD)
laramore6975@gmail.com

Just LoveLeigh

Drew & Sharon Leigh
215 N. Avenue D ~ Clifton
(254) 644-9202
Sharon@JustLoveLeigh.com
www.JustLoveLeigh.com

Lady Bugs

Cathie Lowry
142 N. Avenue D ~ Clifton
(254) 675-3093

Market at the Mill

Lisa Horn
317 W 3rd St ~ Clifton
(254) 715-8160
www.marketatthemillclifton.com

Meredith Kate Fashion & Furnishings

Kathy Lightford
134 N. Avenue D ~ Clifton
(254) 744-8133
meredithkatefashions@gmail.com

Shopko

927 N. Avenue G ~ Clifton
(254) 675-2404
st202@shopko.com
www.shopko.com

Sweet Hazel

Krista Ritzmann
313 W 5th St ~ Clifton
(254) 675-0077
Shopsweethazel@yahoo.com
www.mkt.com/sweethazel

Storage

Bosque County Storage

Mike Schmidt
410 M. Avenue G ~ Clifton
(254) 386-7721
BosqueCountyStorage@gmail.com
www.BosqueCountyStorage.com

Clifton Mini Storage

Colby & Vicki Crockett
4400 W. FM 219 ~ Clifton
(254) 675-6640
crockettranch133@gmail.com
www.cliftonministorage.com

Taxidermy

Hat Creek Taxidermy

Brian Douglas
12132 State Hwy 22 ~ Meridian
(254) 715-0801
bkdouglas2003@yahoo.com

Utilities

5-Five

Todd Clift
(254) 253-0947
todd.clift@energyby5.com

Atmos Energy

Michael Street
1500 W. Loop 340 ~ Waco
(888) 286-6700
michael.street@atmosenergy.com
www.atmosenergy.com

Calpine Corporation

Bosque Energy Center

Larry Small
557 CR 3610 ~ Clifton
(254) 622-8501
lsmall@calpine.com

Heart of Texas Electric

Cooperative, Inc.

Ron Poston
111 S. Johnson Dr. ~ McGregor
(800) 840-2957
ron@hotec.coop
www.hotec.coop

Texas-New Mexico Power

Renee Kettler
1304 N. Avenue G ~ Clifton
(254) 675-3908 ext. 6102
renee.kettler@tnmp.com

United Cooperative Services

Patti Wagner
7975 Hwy. 22 ~ Meridian
(254) 435-2832
patti@united-cs.com
www.united-cs.com

Veterinarians

Clifton Veterinarian Clinic

Dr. Kaki Nicote
4117 Hwy. 6 ~ Clifton
(254) 675-8925
cliftonvetclinic@gmail.com
www.cliftonvetclinic.com

Website Design/ Management

Promit/Texas WebMarketing

Shayne Embry
213 N. Avenue G ~ Clifton
(254) 675-3678
sembry@promit.com
www.texaswebmarketing.com

Chamber Individual/Family Members

Gene & Barbara Aars
Mr. & Mrs. Wylie Basham
Dewayne Burns
Mr. Tom Byrd
Mrs. Jo Cash
Julie & Bryan Davis
Ollie & Robert Evinger
Dr. Don & Joann Gloff
Mr. & Mrs. Cal Goerdel
Mr. & Mrs. Royce Graham
Mr. & Mrs. Bruce Greene
Mary Martha Hall
Mr. & Mrs. Doug Kieta
Mr. & Mrs. Herb Lammert
Bob & Kay Lane
Cindy & Paul Leonard
Ms. Gwen McLarty
Mr. & Mrs. John Mitchell
Keith Morrison
Bob & Glenda Phillips
Ruth Ann & Parker Pieri
Helen Robinson
Mr. & Mrs. Calvin Rueter
Mr. & Mrs. Robert Schafer
Mr. & Mrs. Frank Smith
John & Darlene Thomas
Ken & Lexie Van Tassel

More than just great rates!



CITIZENS STATE BANK



We offer products and services to make banking easier and more convenient for you!

- **Checking, Savings, IRAs, CDs, and more ...**
- **Free Internet Banking**
- **Free Bill Pay**
- **MasterCard Debit Card Available**
- **Lobby and Drive-thru Open on Saturdays**

Lobby Hours: Mon.–Fri. 8:30 a.m.–3:30 p.m.
Saturday 9 a.m.–Noon

Drive-thru: Mon.–Fri. 8 a.m.–4 p.m.
Saturday 9 a.m.–Noon



505 W. 5th, Clifton, TX • (254)675-2211
www.CitizensStateBankTX.com

